

# QUIZ

## WHAT IS YOUR DIAGNOSIS?

66-year-old man was admitted to the hospital for an unrelated condition. Ultrasonography and computer tomography revealed horseshoe kidney with 14 × 6 cm well-circumscribed heterogeneous mass with infiltration of the left renal vein. No lymphadenopathy or distant deposits were seen. Resected horseshoe kidney (17 × 8 × 4,5 cm in size) con-

tained large, solid, yellowish mass located in lower left part and in the center. The kidney weighed 660 g, tumor measured 8 × 6 × 4 cm. Grossly infiltration of left renal pelvis, left renal vein and through renal capsule into surrounding perinephric fat was seen. The histological picture of the tumor is shown on figures 1 and 2.

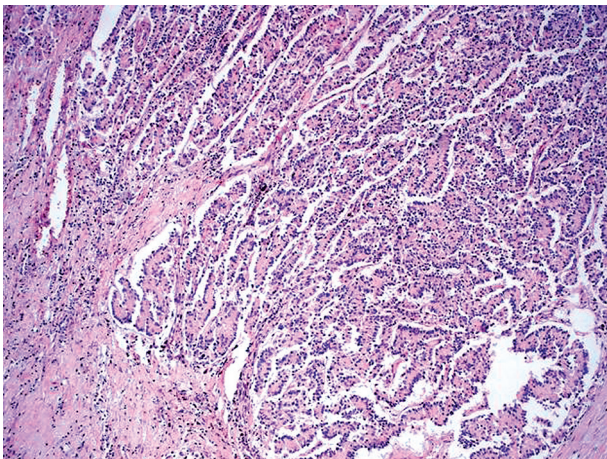


Fig. 1.

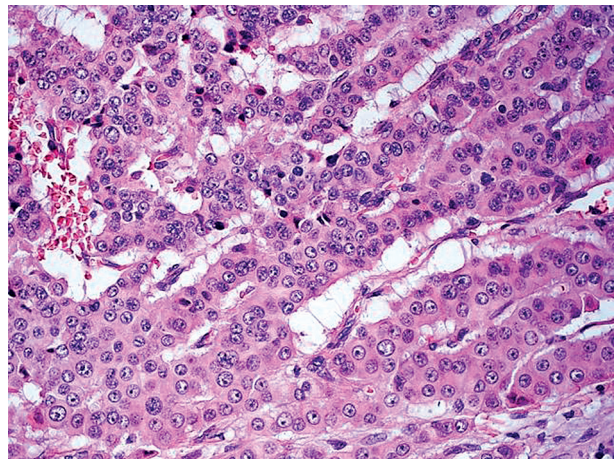


Fig. 2.

Radosław Litwinowicz<sup>1</sup>, Joanna Szpor<sup>1</sup>, Grzegorz Januś<sup>2</sup>, Krzysztof Okoń<sup>1</sup>

<sup>1</sup>Department of Pathomorphology, *Collegium Medicum*, Jagiellonian University

<sup>2</sup>Department of Tumor Pathology, Center of Oncology, Kraków Branch

Answers should be sent to the Editorial Office by 12.02.2011. The correct answer will be announced in the next issue of the *Polish Journal of Pathology*. All participants with the highest number of correct answers to the quizzes published in vol. 61 (4 issues) will be entered into the prize draw for a book.