

Quiz

WHAT IS YOUR DIAGNOSIS?

A 59-year-old male was admitted to the Department of Periodontology and Clinical Oral Pathology due to bilateral thickening of the buccal mucosa and dorsum of the tongue. His major complaints involved xerostomia and dysphagia to solids. He also reported frequent incidence of monucle haematomas after physical effort. Intraoral examination revealed the presence of bilateral submucosal thickenings on both

cheeks and significant macroglossia with deep indentations on the margins of the tongue and depapillation of its dorsum (Fig. 1). Mobility of the tongue was markedly reduced. An incisional biopsy was taken from the buccal mucosa and underlying tissues.

Histopathological examination showed the presence of abundant amorphous eosinophilic deposits in the muscular part of the specimen (Fig. 2).



Fig. 1.

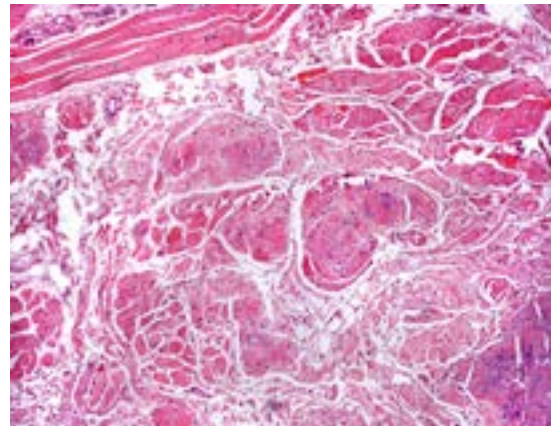


Fig. 2.

Zuzanna Oruba¹, Tomasz Kaczmarzyk², Katarzyna Urbańczyk³, Artur Jurczyszyn⁴,
Szymon Fornagiel⁴, Krystyna Gałązka³, Anna Bednarczyk², Maria Chomyszyn-Gajewska¹

¹Chair of Periodontology and Oral Medicine, Faculty of Medicine,
Jagiellonian University *Medical College*, Krakow, Poland

²Chair of Oral Surgery, Faculty of Medicine, Jagiellonian University *Medical College*, Krakow, Poland

³Chair of Pathomorphology, Faculty of Medicine, Jagiellonian University *Medical College*, Krakow, Poland

⁴Chair and Clinic of Hematology, Faculty of Medicine,
Jagiellonian University *Medical College*, Krakow, Poland

Answers should be sent to the Editorial Office by 15.06.2018. The correct answer will be announced in the next issue of the *Polish Journal of Pathology*. All participants with the highest number of correct answers to the quizzes published in vol. ?? (? issues) will be entered into the prize draw for a book.