

Quiz

WHAT IS YOUR DIAGNOSIS?

A 79-year-old Caucasian woman presented to our outpatient clinic with a freezer bag containing an irregularly shaped mass that had been spontaneously defecated 3 hours previously (Fig. 1). The patient reported a recent history of constipation and blood in her stool. Her past medical history included hypertension, hypothyroidism, obesity, and metabolic syndrome. A physical examination did not reveal signs of weight loss or anaemia. Histopathology of the mass

revealed a tumour composed of sheets containing densely packed, elongated spindle-shaped cells with cigar-shaped centrally-located nuclei and abundant fibrillar eosinophilic cytoplasm. Mitotic figures were observed. There were also foci of haemorrhage, cystic degeneration, and necrosis (Figs. 2, 3). Immunohistochemical staining indicated that the tumour expressed SMA, desmin, and h-caldesmon and was negative for CD117 (c-KIT), CD34, and DOG-1 (Fig. 4).



Fig. 1. Macroscopic examination shows a heterogeneous fleshy mass measuring 8 × 4 × 4 cm

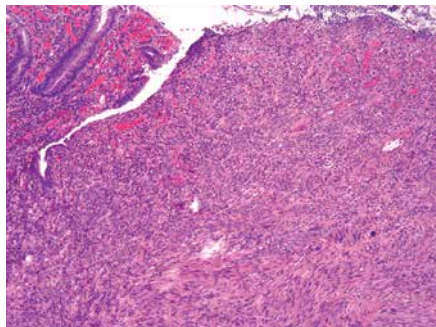


Fig. 2. Histopathological examination shows a pathological mass composed of densely packed elongated spindle-shaped cells

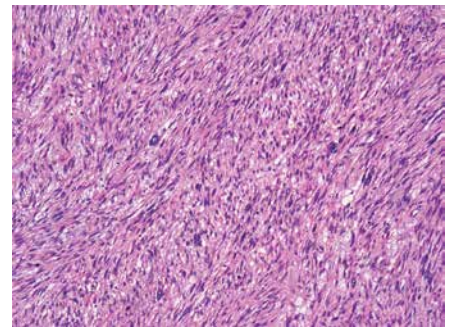


Fig. 3. Haematoxylin-eosin staining revealed spindle cells with nuclear atypia

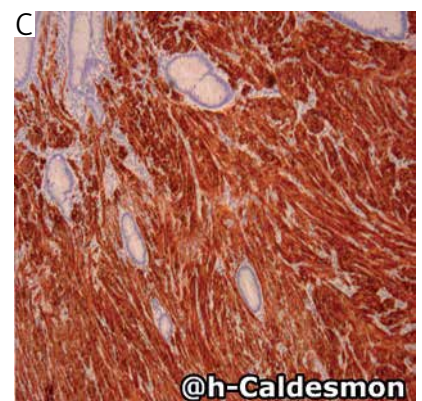
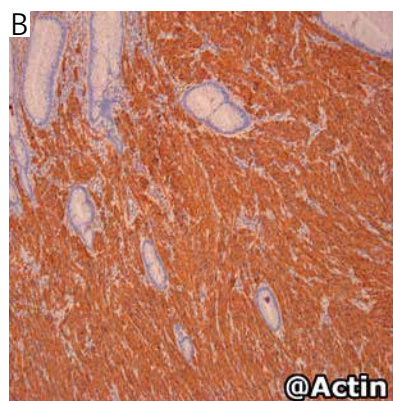
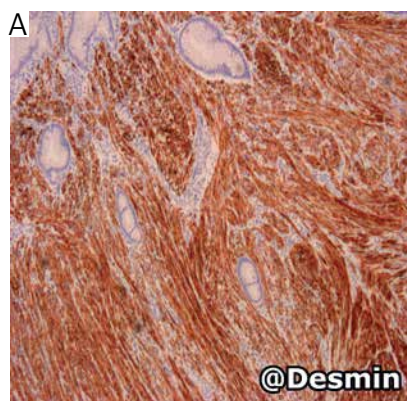


Fig. 4. Immunohistochemical staining revealed expression of desmin (A), actin (B) and h-caldesmon (C)

Pierre de Mathelin¹, Felix Lerintiu², Jean-Baptiste Delhorme¹

¹Hôpitaux Universitaires de Strasbourg, France

²Hôpitaux Civils de Colmar, France

Answers should be sent to the Editorial Office until 31.03.2024. The correct answer will be announced in the next issue of the Polish Journal of Pathology.