

The role of NF- κ B and Smac/DIABLO proteins in the treatment response and survival of acute myeloid leukemia patients

Agnieszka Pluta¹, Tadeusz Robak¹, Barbara Cebula², Agata Majchrzak², Piotr Pluta³, Kamil Brzozowski¹, Konrad Stępa¹, Anna Szmigielska-Kapton¹, Olga Grzybowska-Izydorczyk¹, Magdalena Czemerska¹, Piotr Smolewski¹, Agnieszka Wierzbowska¹

¹Department of Hematology, Medical University of Lodz, Lodz, Poland

²Department of Experimental Hematology, Medical University of Lodz, Lodz, Poland

³Department of Surgical Oncology Copernicus Memorial Hospital, Lodz, Poland

Submitted: 30 December 2017

Accepted: 22 March 2018

Arch Med Sci

DOI: <https://doi.org/10.5114/aoms.2019.89918>

Copyright © 2019 Termedia & Banach

Corresponding author:

Dr. Agnieszka Pluta
Department of Hematology
Medical University of Lodz
2 Ciołkowskiego Str.
93-510 Lodz, Poland
E-mail: agnieszka.pluta@op.pl

Abstract

Introduction: The misbalance between a family of inhibitor of apoptosis proteins (IAP), regulated by the nuclear factor kappa B (NF- κ B) and their natural antagonist second mitochondrial-derived activator of caspases/direct IAP binding protein with low pI (Smac/DIABLO) are important to biology of acute myeloid leukemia (AML).

Material and methods: The aim of the study was to assess NF- κ B and Smac/DIABLO proteins expression in blasts of 109 newly diagnosed AML patients using the multicolor flow cytometry and evaluate their influence on AML patients outcome.

Results: Expression of NF- κ B and of Smac/DIABLO proteins were found in 95% and 98% of the patients, respectively. A negative correlation between Smac/DIABLO and NF- κ B was observed. Age < 60 years old as well as higher Smac/DIABLO expression were associated with a higher probability of complete response achievement in the multivariate analysis. Longer overall survival (OS) in the univariate and multivariate analyses was influenced by age < 60 years old, a favorable or intermediate-risk karyotype and high Smac/DIABLO expression. Additionally, in the survival analysis of the subgroups, the patients aged < 60 years old, with high Smac/DIABLO expression, lower NF- κ B expression and < 50% of bone marrow blasts who were treated with standard treatment had better OS.

Conclusions: Lower NF- κ B and higher Smac/DIABLO expression may influence AML patients outcome.

Key words: apoptosis, acute myeloid leukemia, NF- κ B, Smac/DIABLO.

Introduction

Acute myeloid leukemia (AML) accounts for one-fourth of all the cases of adults leukemia in Western countries, with an incidence of about 4 cases per 100,000 citizens per year [1]. Median age at diagnosis is 69 years [1, 2]. Acute myeloid leukemia is a very heterogeneous disorder due to many pathways of leukemogenesis, and additional genetic abnormalities that appear in AML cells [2].

According to the Nomenclature Committee on Cell Death (NCCD), classification of cell death is divided into eight subtypes: apoptosis, autophagy, mitotic catastrophe, paraptosis, necrosis, oncosis, pyroptosis and anoikis [3, 4]. All these types of cell degradation can be considered as a potential target in the treatment of malignancies. In fact, apoptosis and autophagy are the most known processes of cell death, which is connected with development of novel, targeted treatment options in neoplastic disorders [3, 5]. Apoptosis disturbance in AML is a well-established phenomenon, which supports blast cells in their escape from programmed death [6–8]. One of the ways is overexpression of the inhibitor of apoptosis proteins (IAP) family. The IAP's family is one of the most important groups of apoptosis-regulating proteins that inhibit crucial for cell death activation of caspase-3, -7 and -9 [9–11]. Eight human IAP family members have been identified: XIAP (X-linked inhibitor of apoptosis), cIAP-1 (cellular inhibitor of apoptosis 1), cIAP2 (cellular inhibitor of apoptosis 2), survivin, NAIP (neuronal apoptosis inhibitory protein), livin, BRUCE/Apollon and IAP-like protein 2 (inhibitor apoptosis protein-like protein 2) [11, 12]. Expression of the whole IAP family is regulated by a nuclear factor kappa B (NF- κ B). The NF- κ B constitutive activation is a common phenomenon in different cancers, and results in the aberrant expression of NF- κ B target genes and leads to malignant transformation, metastatic dissemination, abnormal cell proliferation or resistance to cell death [12, 13]. Inhibitor of apoptosis proteins family can be inhibited by Smac/DIABLO (second mitochondrial-derived activator of caspases/direct IAP binding protein with low PI), Omi/HrtA2 (HTRA serine peptidase 2) and XAF-1 (XIAP-associated factor 1) [7–10]. Smac/DIABLO protein appears to be one of the strongest IAPs inhibitors [10–13].

Influence of separate IAP's family members on the treatment outcome and survival in AML patients has been presented by different groups [15–18]. It has been shown that overexpression of IAP family members in AML leukemic blasts/cells correlates with a low complete response (CR) rate and shorter overall survival (OS) [15–17]. Especially, the high survivin protein expression is associated with shorter OS [14]. Studies on XIAP have shown that its overexpression was associated with a lower CR rate and the worst OS as compared to the patients with none or low XIAP expression [16, 17]. In AML patients various expression of different IAP's family members has been described. One common link of IAP's family may be their transcription factor, i.e. NF- κ B. Inhibition of NF- κ B plays a key role in promoting apoptosis after treatment. There is only little data evaluating expression of NF- κ B protein in AML patients.

However, important role of Smac/DIABLO protein, the strongest IAP's family inhibitor in AML, has been established [18]. A correlation between high Smac/DIABLO expression and a good treatment outcome has been observed [18].

Based on these experiences, we decided to study expression of IAP family regulator NF- κ B protein and its influence on CR achievement, and survival in AML patients with simultaneous examination of the main IAP's inhibitor Smac/DIABLO protein.

Material and methods

Patients

The study involved 109 patients with newly diagnosed AML and hospitalized between January 2008 and December 2012 in the Department of Hematology, Medical University of Lodz. Characteristics of the patients are summarized in Table I. The study was approved by the Research Ethics Committee of Medical University of Lodz. A written informed consent was obtained from all the patients.

The diagnosis was based on the World Health Organization Classification of Haematopoietic and Lymphoid Tissues (WHO) [2]. Median age among the patients was 61 years (range from 18 to 87 years).

Forty-nine patients received an intensive induction chemotherapy according to the Polish Adult Leukemia Group (PALG) protocols, described in former PALG's publications [20, 21]. Fourteen and thirty five patients received DA (daunorubicin and cytarabine) and DAC (daunorubicin, cytarabine and cladribine) induction treatment, respectively. Fifty-nine patients received non-intensive treatment, including 23 patients treated with low dose cytarabine (LD-AraC), 8 with azacytadine (AZA) and 22 with hydroxyurea (HU). Six patients underwent best supportive care (BSC) only. Ten patients underwent bone marrow transplantation procedure. Eight patients received allogeneic stem cell transplantation (SCT) (5 from unrelated and 3 from a sibling donor) and 2 patients had autologous SCT.

Response to the treatment was defined in accordance with the revised recommendations of the International Working Group for Diagnosis, Standardization of Response Criteria, treatment Outcomes and Reporting Standards for therapeutic Trials in Acute Myeloid Leukemia [1, 22]. Briefly, CR was defined as the presence of less than 5% of bone marrow (BM) blasts with a neutrophil count higher than 1.0 G/L, a platelet count higher than 100 G/L and no extramedullary disease. Partial remission (PR) was established with either 5–25% BM blasts, a 50% or a higher decrease in BM blasts, or BM blasts < 5% but with the presence of Auer rods. No response (NR) was

established for the patients who did not fulfill any of the mentioned above criteria. Early death (ED) was defined as a death from any cause within four weeks after the induction therapy and was considered as the treatment failure. Disease free survival (DFS) was calculated from the first day of CR until documentation of a relapse [1]. Overall survival (OS) was calculated from the time of diagnosis until death or date of stem cell transplantation [1].

Laboratory tests

Blood and bone marrow sampling

Venous blood or bone marrow samples were collected at the time of diagnosis into pyrogen-free ethylenediaminetetraacetic acid (EDTA) tubes. Immunophenotyping of leukemic cells was performed routinely in the whole peripheral blood or bone marrow using the flow cytometry: the “lysed-not washed” method. A routine panel of monoclonal antibodies HLA-DR, CD34, CD45, CD13, CD15, CD33, CD117 conjugated with fluorescein isothiocyanate (FITC) and phycoerythrin (PE) was applied (all BD Pharmingen, San Diego, CA, USA).

Assessment of expression of NF- κ B and Smac/DIABLO protein

Flow cytometry cell preparation

Peripheral blood or bone marrow mononuclear cells were isolated from EDTA samples by centrifugation on a Histopaque-1077 (Sigma Diagnostic, St Louis, MO, USA) density gradient, for 30 min at 3600 rpm. The interphase region containing mononuclear cells was collected and washed, once in Hanks' Balanced Salt Solution (Biomed, Lublin, Poland) and, twice in phosphate buffered saline (PBS; Sigma Aldrich Chemie GmbH, Steinheim, Germany). Then the samples were fixed in 1% paraformaldehyde (PFA) (15 min at 4°C) and in 90% ethanol for 30 min at -20°C for the flow cytometry analysis.

The frozen cells were washed in PBS, centrifuged (5 min, 1100 rpm) and incubated in 0.01% saponin for 1 min. The cells were then washed in PBS and centrifuged (5 min, 1100 rpm). The incubation with primary antibody (Ab) at a dilution of 1 : 50 of anti-NF κ B (MAB28881, monoclonal mouse anti-human Ab, R&D System, Minneapolis, MN, USA) and 1 : 100 anti-Smac/DIABLO (AF 7891), polyclonal goat Ab, R&D System, Minneapolis, MN, USA) was performed at 4°C, overnight. On the following day, the samples were washed in PBS, centrifuged (5 min, 1100 rpm) and incubated for 120 min with secondary FITC-conjugated Abs at a dilution of 1 : 20. Afterwards, the samples were washed in PBS, centrifuged (5 min, 1100 rpm) before being resuspended in 400 μ l PBS and sub-

Table I. Patients' characteristics

Parameter	Value
Number of patients	109
Sex, n (%)	
Male	58 (53)
Female	51 (47)
Median age, years (range)	61 (18–87)
Median WBC [G/l]	15.4 (0.67–408)
Median LDH [U/l]	399
Median bone marrow blasts (%)	58 (20–91.5)
WHO, n (%):	
AML with recurrent genetic abnormalities	7 (6)
AML with myelodysplastic changes	22 (21)
Therapy related myeloid neoplasm	4 (3)
AML NOS	76 (70)
Myeloid sarcoma	0 (0)
Cytogenetic SWOG subgroups, n (%):	
Good	7 (6)
Intermediate	58 (53)
Poor	19 (18)
Unknown	25 (23)
Treatment, n (%):	
Intensive	
DA	14 (13)
DAC	35 (32)
Non-intensive	
LD-AraC	23 (21.5)
Azacytydine	8 (7.5)
Hydroxyurea	22 (20.5)
BSC	6 (5.5)

WBC – white blood cells, LDH – lactate dehydrogenase, WHO – World Health Organization, AML – acute myeloid leukemia, NOS – not otherwise specified, SWOG – Southwest Oncology Group, DA – daunorubicine plus cytarabine, DAC – daunorubicine plus cladribine, LD-AraC – low dose cytarabine, BSC – best supportive care

jected to the flow cytometry analysis. At the same time, samples with isotype controls were also prepared (Normal goat IgG control, 1 : 100 dilution, R&D System, Minneapolis, MN, USA; Normal mouse IgG control, 1 : 100 dilution, R&D System, Minneapolis, MN, USA). All preparations have been previously described in detail [15, 18].

Flow cytometry analysis

All fluorescence measurements were performed by the use of flow cytometry (FACScan; Becton-Dickinson, San Jose, CA, USA). An acquisition gate was established based on FSC (forward scatter) and SSC (side scatter) that included mononuclear cells according to the previous immunophenotype. Cell fluorescence was measured using standard emission filters: FL1 (green, λ 515–545 nm), FL2 (orange, λ 564–606 nm). For each analysis 10,000 events were acquired and analyzed using the CellQuestPro software (Becton Dickinson, San Jose, CA, USA). Expressions of Smac/DIABLO and NF- κ B were presented as a percentage of Smac/DIABLO and NF- κ B-positive cells in the whole population of leukemic blasts. All the flow cytometry measurements were performed on 10,000 cells per sample. The population of Smac/DIABLO and NF- κ B-positive cells was identified after gating

based on appropriate isotype controls. For data quantitation the FACS DIVA software was used. “High” and “low” expression was established according to the median of Smac/DIABLO and NF- κ B-positive cells estimated in the whole group of patients. Examples of flow cytometry images are presented in Figure 1.

Statistical analysis

The statistical analysis was performed with the Statistica 12.0 (Tulasa, OK, USA) software. Statistical comparison of “low-expressers” and “high-expressers” was performed using the Mann-Whitney *U* test. Correlations between the variables were assessed using the Spearman rank test. Overall survival was estimated using the Kaplan-Meier method. The χ^2 and logistic regression tests were applied to investigate dependence between individual factors and CR rate. The log-rank test was

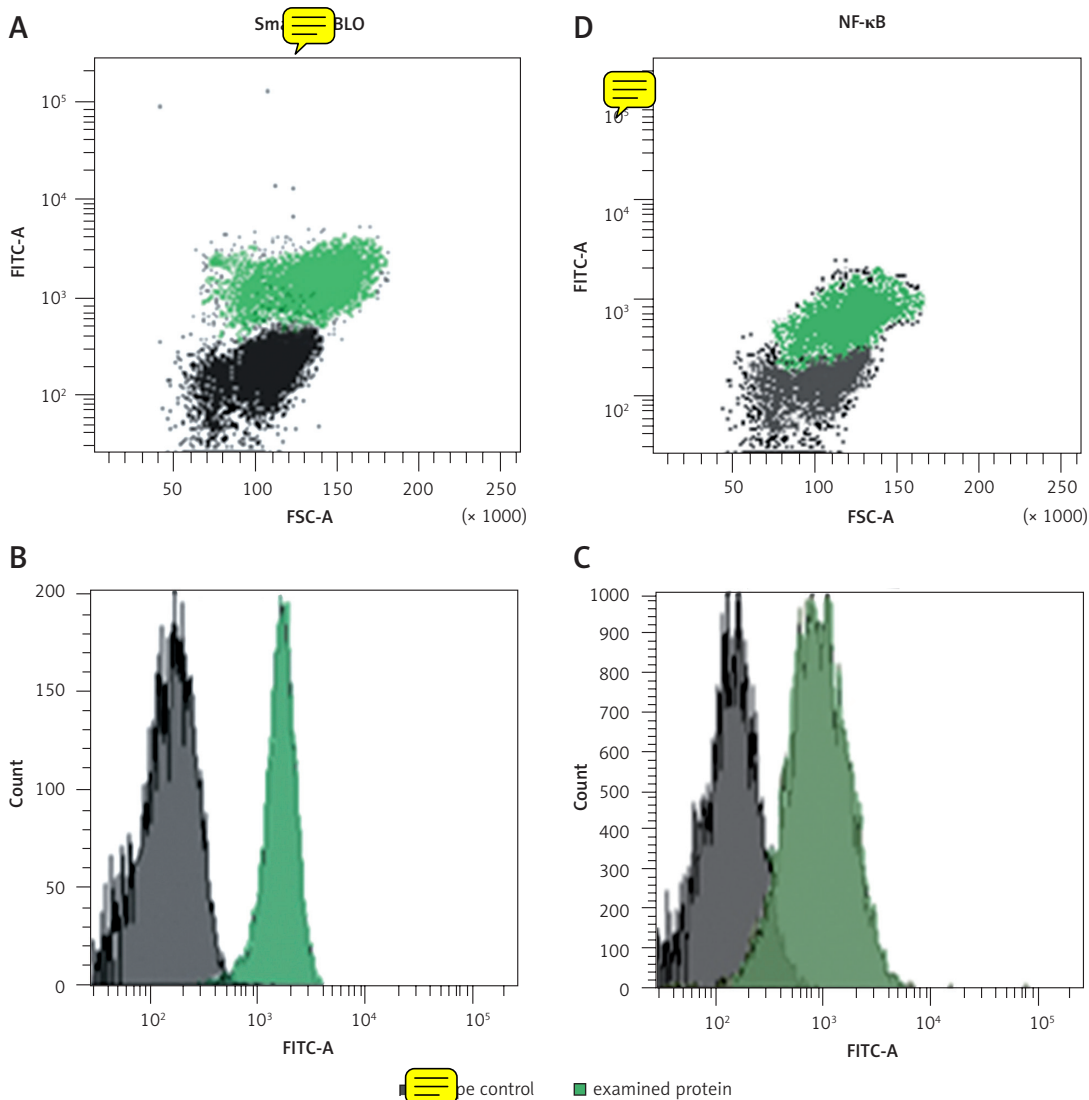


Figure 1. Protein expression in flow cytometry. **A** and **B** – Smac/DIABLO protein expression. **C** and **D** – NF- κ B protein expression

used to evaluate the univariate effects of particular variables on OS. For the multivariate analysis of factors affecting OS Cox, a proportional hazard regression model was applied. Comparisons and correlations between the examined parameters were considered significant when $p < 0.05$.

Results

Intracellular flow cytometry proteins' expression

NF-κB and Smac/DIABLO protein expression was measured in 109 newly diagnosed AML patients. The expression of NF-κB and Smac/DIABLO protein was found in 104 of 109 (95%) and 107 of 109 (98%) patients, respectively. Median expression was 23.9% (0–94.7%) and 61.4% (ranged 0–99.9%) for NF-κB and Smac/DIABLO proteins, respectively.

Correlation between expression of NF-κB and Smac/DIABLO proteins in the acute myeloid leukemia patients

We evaluated the relationship between expression of NF-κB and Smac/DIABLO proteins. In the whole analyzed group a trend towards a negative correlation between the expression of Smac/DIABLO and NF-κB proteins was observed ($R = -0.17$, $p = 0.06$).

NF-κB and Smac/DIABLO expression and treatment outcome

Response to the treatment

The analyses of influence of NF-κB and Smac/DIABLO on treatment response were performed only in intensively treated patients' group. Thirty-six (73%) of 49 intensively treated patients achieved CR. In the univariate analysis age below 60 years old, a good karyotype, the percentage of blast $< 50\%$ in bone marrow and higher expression of Smac/DIABLO were associated with a higher probability of CR achievement ($p = 0.02$, $p = 0.007$, $p = 0.03$, $p = 0.03$, respectively, Table II).

In the multivariate analysis, age below 60 years old and high Smac/DIABLO protein expression were the only factors that were associated with a higher probability of CR achievement ($p = 0.008$, and $p = 0.04$, respectively; Table III).

Overall survival

Median time of OS for the whole cohort of patients was 5 months (range 0.03–81.6). The probability of one-year survival was 32%. In the univariate log-rank analysis, better OS was influenced by age less than 60 years old, favorable or intermediate karyotype and higher expression of Smac/DIABLO ($p < 0.0001$, $p < 0.039$, $p < 0.0015$, respectively, Table IV). Additionally, the same factors: age

Table II. Univariate analysis (χ^2 test) of factors associated with complete response rate in intensively treated patients

Factor	n	CR (%)	P-value
Age [years]:			
≤ 60	41	31 (75)	0.02
< 60	9	4 (44)	
Risk group by karyotype:			
Good	5	5 (100)	0.007
Intermediate	32	26 (68)	
Poor	7	4 (57)	
Unknown	6	4 (66)	
Blasts in BM (%):			
≤ 50	31	25 (80)	0.03
< 50	19	10 (53)	
WBC [G/l]:			
≤ 20	28	18 (64)	0.31
< 20	22	17 (77)	
LDH [IU/l]:			
< UNL	15	10 (67)	0.61
< UNL	27	20 (74)	
Smac/DIABLO:			
≤ Me	22	12 (54)	0.03
< Me	28	23 (82)	
NF-κB:			
≤ Me	20	17 (85)	0.51
< Me	30	18 (60)	

BM – bone marrow, UNL – upper normal limit, WBC – white blood cell, LDH – lactate dehydrogenase

Table III. Multivariate analysis (logistic regression) of factors associated with complete response rate

Factor	OR (95% CI)	P-value
Age ≤ 60 years old >	6.042 (1.480–24.668)	0.008
Blasts in BM ≤ 50% >	0.521 (0.213–1.277)	0.14
Smac/DIABLO ≤ Me >	0.370 (0.155–0.883)	0.04

< 60 years old, favorable or intermediate karyotype and high expression of Smac/DIABLO protein influenced longer OS in the multivariate Cox analysis ($p = 0.00016$, $p = 0.01$, $p = 0.0014$, respectively, Table V). In the survival univariate analysis of the subgroup treated with “apoptosis inducers” (standard induction or LD Ara-C) age below 60 years old and high Smac/DIABLO protein expression were

Table IV. Univariate analysis (log rank test) of the factors associated with the probability of overall survival

Factor	n	HR (95% CI)	P-value
Age [years]:			
≤ 60	51	2.4396 (1.589; 3,745)	0.00005
< 60	58		
Risk group by karyotype:			
Good, intermediate	66	2.0653 (1.162; 3,672)	0.039
Poor	18		
Blasts in BM (%):			
≤ 50	43	1.1637 (0.769; 1.760)	0.47
< 50	66		
WBC [G/l]:			
≤ 20	59	1.1705 (0.778; 1.760)	0.45
< 20	50		
LDH [IU/l]:			
< UNL	22	1.2969 (0.766; 2.197)	0.3360
< UNL	69		
Smac/DIABLO:			
≤ Me	54	0.5061 (0.335; 0.765)	0.0015
< Me	55		
NFκB:			
≤ Me	54	1.1773 (0.783; 1.770)	0.43
< Me	55		

BM – bone marrow, WBC – white blood cells, UNL– upper normal limit, LDH – lactate dehydrogenase

Table V. Multivariate analysis (Cox model) of factors associated with decreased probability of OS

Factor	Hazard ratio (95% CI)	P-value
Age > 60 years	2.3 (0.4–1.3)	0.00016
Poor and unknown-risk karyotype	2.0 (0.16–1.28)	0.01
Smac/DIABLO < Me	0.5 (0.26–1.1)	0.0014

found to be statistically significant risk factors for longer OS ($p = 0.0005$, $p = 0.003$, respectively) (Figure 2). Moreover, a trend towards better survival in the patients with lower NF-κB protein expression and less than 50% in bone marrow blasts was ob-

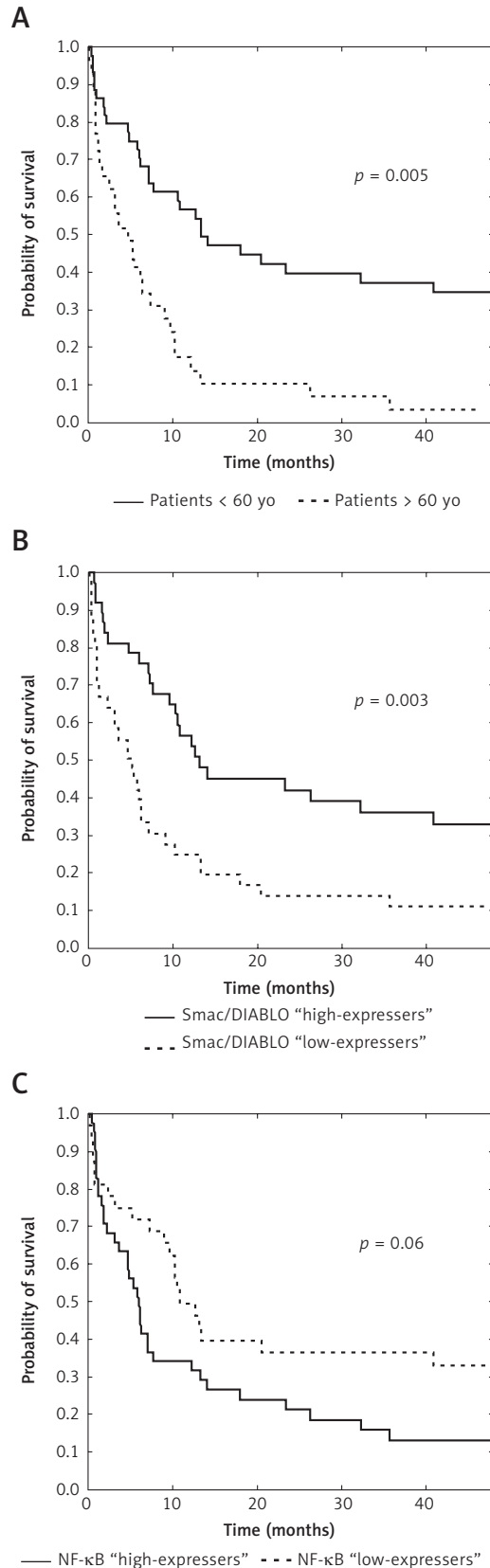


Figure 2. Probability of survival (Kaplan-Meier curves) according to age (A), Smac/DIABLO protein expression (B) NF-κB protein expression (C) in patients treated with standard intensive therapy and LD-AraC

served ($p = 0.06$ and $p = 0.07$, respectively) (Figure 2). In the multivariate survival analysis of this subgroup only age < 60 years old and high Smac/DIABLO protein expression was associated with longer OS ($p = 0.0005$ and $p = 0.002$, respectively).

Relationship between expression of NF- κ B and Smac/DIABLO proteins and standard acute myeloid leukemia risk factors

Expression of NF- κ B protein in the patients did not differ significantly in the risk groups divided according to the factors such as age (< 60 years vs. ≥ 60 years), karyotype (good, intermediate and unknown vs. poor), number of WBC count (≤ 20 G/l vs. > 20 G/l), percentage of leukemic blasts in bone marrow ($\leq 50\%$ vs. $> 50\%$) and LDH (\leq UNL [upper normal limit] vs. $>$ UNL). Similarly, expression of Smac/DIABLO protein did not correlate with all the mentioned above AML risk factors.

Discussion

Nuclear factor kappa B plays an important role in survival of neoplastic cells also in AML. In AML patients NF- κ B is constructively activated by different expression in each patient. This factor is crucial for activation of various mechanisms of escaping from cell death. One of those is stimulation of overproduction of IAP's, which block apoptosis enzymes. In the presented study NF- κ B and Smac/DIABLO protein expression was measured in the newly diagnosed AML patients' blasts. Our study is the first one where simultaneously expression of NF- κ B and expression of Smac/DIABLO proteins have been evaluated in the AML patients and correlated with the factors associated with clinical outcome of AML. Median expression was 23.9% and 61.4% for NF- κ B and Smac/DIABLO proteins, respectively. A trend towards a negative correlation between the expression of NF- κ B and Smac/DIABLO proteins was demonstrated.

The presence of NF- κ B protein in U937 and HL-60 AML cell lines as well as patients' blasts and leukemic stem cells has been previously described [23–27]. It has been shown that NF- κ B is constitutively activated in AML blasts and leukemic stem cells of a large percent of patients [26]. In our cohort NF- κ B expression was found in 104 of 109 (95%) patients, which is similar to other results [27]. NF- κ B has been shown to upregulate transcription of proteins that promote cell survival, stimulate growth, induce angiogenesis and reduce sensibility to apoptosis. Expression of IAP's family members has been shown to be regulated also by NF- κ B [13]. Importantly, Schepers *et al.* have shown that constitutive activation of NF- κ B plays a crucial role in survival of AML cells but not in the development of leukemia [30]. In our study,

a trend towards shorter OS in the patients treated with "apoptosis inducers" schema with higher NF- κ B expression was observed ($p = 0.06$). Lack of statistical significance was probably related to the not very big number of patients. These results are in accordance with Schepers' observation that the patients with lower expression of NF- κ B are more sensitive to chemotherapy, due to the lower activation of apoptosis escaping pathways [30].

Overexpression of natural IAP's antagonist, Smac/DIABLO has been associated with a higher CR rate and better OS in AML patients in many studies [18, 31]. In the present study, high-expressors of Smac/DIABLO protein had longer OS. What is more, Smac/DIABLO overexpression was an independent risk factor of CR achievement in the multivariate analysis.

Smac/DIABLO is a small molecule, which induces apoptosis when it is released from the intramembrane space of mitochondrion to the cytosol. Many studies have evaluated the potential role Smac/DIABLO like proteins in cancer treatment. Recently, Safferthal *et al.* have shown that Smac/DIABLO mimetic circumvent apoptosis resistance in AML cell by inducing a programmed form of necrosis, necroptosis in a TNF- α dependent manner [32]. *In vitro* studies have shown that Smac/DIABLO like proteins decrease expression of IAP's family members as well as NF- κ B [33]. In our study a negative correlation between Smac/DIABLO and NF- κ B beared out this observation.

Based on our observations, we may conclude that high NF- κ B expression is an adverse risk factor of the treatment outcome. Moreover, high Smac/DIABLO protein expression is a good predictor of CR achievement and longer OS.

Further studies are necessary to establish the potential role of the combination of inhibitor of NF- κ B with small molecules against IAP family, like Smac/DIABLO, in the treatment of AML patients.

Acknowledgement

This work was supported partly by the government grant from the State Committee for Scientific Research (KBN) (No 4374/B/P01/2010/39) and partly by the Medical University of Lodz (No 503-1093-1, No 503/8-043-01).

Conflict of interest

The authors declare no conflict of interest.

References

1. Döhner H, Estey E, Grimwade D, et al. Diagnosis and management of AML in adults: 2017 ELN recommendations from an international expert panel. *Blood* 2017; 129: 424-47.

2. Aber DA, Orazi A, Hasserjian R, et al. The 2016 revision to the World Health Organization classification of myeloid neoplasm and acute leukemia. *Blood* 2016; 127: 2391-404.
3. Galluzzi L, Vitale I, Abrams JM, et al. Molecular definitions of cell death subroutines: recommendations of the Nomenclature Committee on Cell Death 2012. *Cell Death Differ* 2012; 19: 107-20.
4. Safi SZ, Qvist R, Ong G, et al. Stimulation of β -adrenergic receptors plays a protective role via increased expression of RAF-1 and PDX-1 in hyperglycemic rat pancreatic islet (RIN-m5F) cells. *Arch Med Sci* 2017; 13: 470-80.
5. Kutwin M, Sawosz E, Jaworski S, et al. Investigation of platinum nanoparticle properties against U87 glioblastoma multiforme. *Arch Med Sci* 2017; 13: 1322-34.
6. Zhivotovsky B, Orrenius S. Carcinogenesis and apoptosis: paradigms and paradoxes. *Carcinogenesis* 2006; 27: 1939-45.
7. Zhivotovsky B, Orrenius S. Cell death mechanisms: crosstalk and role in disease. *Exp Cell Res* 2010; 316: 1374-83.
8. Nikolic I, Andjelkovic M, Zaric M, et al. Induction of mitochondrial apoptotic pathway by raloxifene and estrogen in human endometrial stromal ThESC cell line. *Arch Med Sci* 2017; 13: 293-301.
9. Wrzesien-Kus A, Smolewski P, Sobczak-Pluta A, Wierzbowska A, Robak T. The inhibitor of apoptosis protein family and its antagonists in acute leukemias. *Apoptosis* 2004; 9: 705-15.
10. Smolewski P, Robak T. Inhibitors of apoptosis proteins (IAPs) as potential molecular targets for therapy of hematological malignancies. *Curr Mol Med* 2011; 11: 633-49.
11. Fulda S. Inhibitor of apoptosis (IAP) proteins in hematological malignancies: molecular mechanisms and therapeutic opportunities. *Leukemia* 2014; 28: 1414-22.
12. Tamm I, Kornblau SM, Segall H, et al. Expression and prognostic significance of IAP-family genes in human cancers and myeloid leukemias. *Clin Cancer Res* 2000; 6: 1796-803.
13. Gasparini C, Celeghini C, Monasta L, Zauli G. NF- κ B pathways in hematological malignancies. *Cell Mol Life Sci* 2014; 71: 2083-102.
14. Hanahan D, Weinberg RA. Hallmarks of cancer: the next generation. *Cell* 2011; 144: 646-74.
15. Pluta A, Wierzbowska A, Cebula-Obrzut B, et al. Prognostic value of inhibitor of apoptosis protein family expression in patients with acute myeloid leukemia. *Leuk Lymphoma* 2015; 56: 2529-35.
16. Sung KW, Choi J, Hwang YK, et al. Overexpression of X-linked inhibitor of apoptosis protein (XIAP) is an independent unfavorable prognostic factor in childhood de novo acute myeloid leukemia. *J Korean Med Sci* 2009; 24: 605-13.
17. Tamm I, Richter S, Scholz F, et al. XIAP expression correlates with monocytic differentiation in adult de novo AML: impact on prognosis. *Hematol J* 2004; 5: 489-95.
18. Pluta A, Wrzesien-Kus A, Cebula-Obrzut B, et al. Influence of high expression of Smac/DIABLO protein on the clinical outcome in acute myeloid leukemia patients. *Leuk Res* 2010; 34: 1308-13.
19. Weinberg OK, Seetharam M, Ren L, et al. Clinical characterization of acute myeloid leukemia with myelodysplasia-related changes as defined by the 2008 WHO classification system. *Blood* 2009; 113: 1906-8.
20. Holowiecki J, Grosicki S, Giebel S, et al. Cladribine, but not fludarabine, added to daunorubicin and cytarabine during induction prolongs survival of patients with acute myeloid leukemia: a multicenter, randomized phase III study. *J Clin Oncol* 2012; 30: 2441-8.
21. Pluta A, Robak T, Wrzesien-Kus A, et al. Addition of cladribine to the standard induction treatment improves outcomes in a subset of elderly acute myeloid leukemia patients. Results of a randomized Polish Adult Leukemia Group (PALG) phase II trial. *Am J Hematol* 2017; 92: 359-66.
22. Cheson BD, Bennett JM, Kopecky KJ, et al.; International Working Group for Diagnosis, Standardization of Response Criteria, Treatment Outcomes, and Reporting Standards for Therapeutic Trials in Acute Myeloid Leukemia. Revised recommendations of the International Working Group for Diagnosis, Standardization of Response Criteria, Treatment Outcomes, and Reporting Standards for Therapeutic Trials in Acute Myeloid Leukemia. *J Clin Oncol* 2003; 21: 4642-9. Erratum in: *J Clin Oncol* 2004; 22: 576.
23. Davoudi Z, Akbarzadeh A, Rahmatiyamchi M, et al. Molecular target therapy of AKT and NF- κ B signaling pathways and multidrug resistance by specific cell penetrating inhibitor peptides in HL-60 cells. *Asian Pac J Cancer Prev* 2014; 15: 4353-8.
24. Ortiz-Lazareno PC, Bravo-Cuellar A, Lerma-Díaz JM, et al. Sensitization of U937 leukemia cells to doxorubicin by the MG132 proteasome inhibitor induces an increase in apoptosis by suppressing NF- κ B and mitochondrial membrane potential loss. *Cancer Cell Int* 2014; 14: 13.
25. Li J, Volk A, Zhang J, et al. Sensitizing leukemia stem cells to NF- κ B inhibitor treatment in vivo by inactivation of both TNF and IL-1 signaling. *Oncotarget* 2017; 8: 8420-35.
26. Cilloni D, Martinelli G, Messa F, Baccarani M, Saglio G. Nuclear factor κ B as a target for new drug development in myeloid malignancies. *Haematologica* 2007; 92: 1224-9.
27. Guzman ML, Neering SJ, Upchurch D, et al. Nuclear factor- κ B is constitutively activated in primitive human acute myelogenous leukemia cells. *Blood* 2001; 98: 2301-7.
28. Braun T, Carvalho G, Coquelle A, et al. NF- κ B constitutes a potential therapeutic target in high-risk myelodysplastic syndrome. *Blood* 2006; 107: 1156-65.
29. Baumgartner B, Weber M, Quirling M, et al. Increased I κ B kinase activity is associated with activated NF- κ B in acute myeloid blasts. *Leukemia* 2002; 16: 2062-71.
30. Schepers H, Eggen BJ, Schuringa JJ, Vellenga E. Constitutive activation of NF- κ B is not sufficient to disturb normal steady-state hematopoiesis. *Haematologica* 2006; 91: 1710-11.
31. Pluta A, Wrzesien-Kus A, Cebula-Obrzut B, et al. Influence of high expression of Smac/DIABLO protein on the clinical outcome in acute myeloid leukemia patients. *Leuk Res* 2010; 34: 1308-13.
32. Safferthal C, Rohde K, Fulda S. Therapeutic targeting of necroptosis by Smac mimetic bypasses apoptosis resistance in acute myeloid leukemia cells. *Oncogene* 2017; 36: 1487-502.
33. Steinwascher S, Nuges AL, Schoeneberger H, Fulda S. Identification of a novel synergistic induction of cell death by Smac mimetic and HDAC inhibitors in acute myeloid leukemia cells. *Cancer Lett* 2015; 366: 32-43.