

„Immunotherapy of Acute Lymphoblastic Leukemia”

Sebastian Giebel

*Dept. of Bone Marrow Transplantation
and Onco-Hematology*

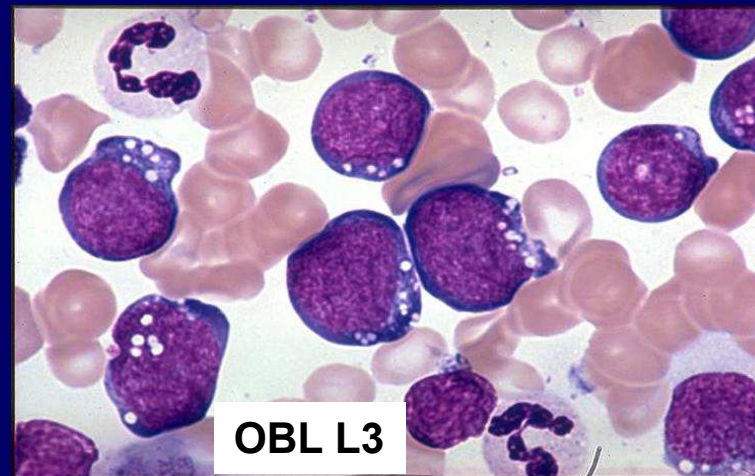
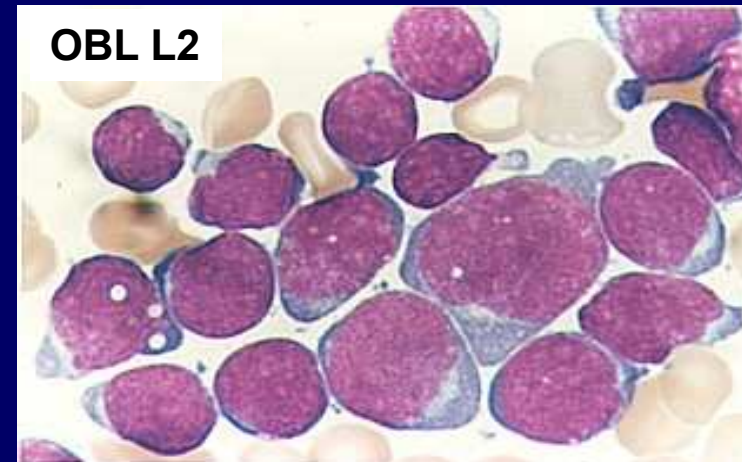
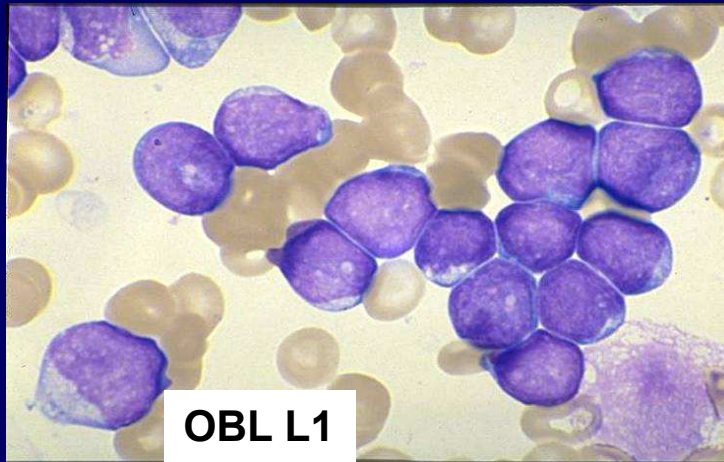


Cancer Immunotherapy

	Non-specific	Targeted
Humoral	-	Naked antibodies Immunotoxins
Humoral → Cellular	Check-point inhibitors	Bispecific antibodies
Cellular	Hematopoietic stem cell transplantation	CAR T -cells



Acute Lymphoblastic Leukemia



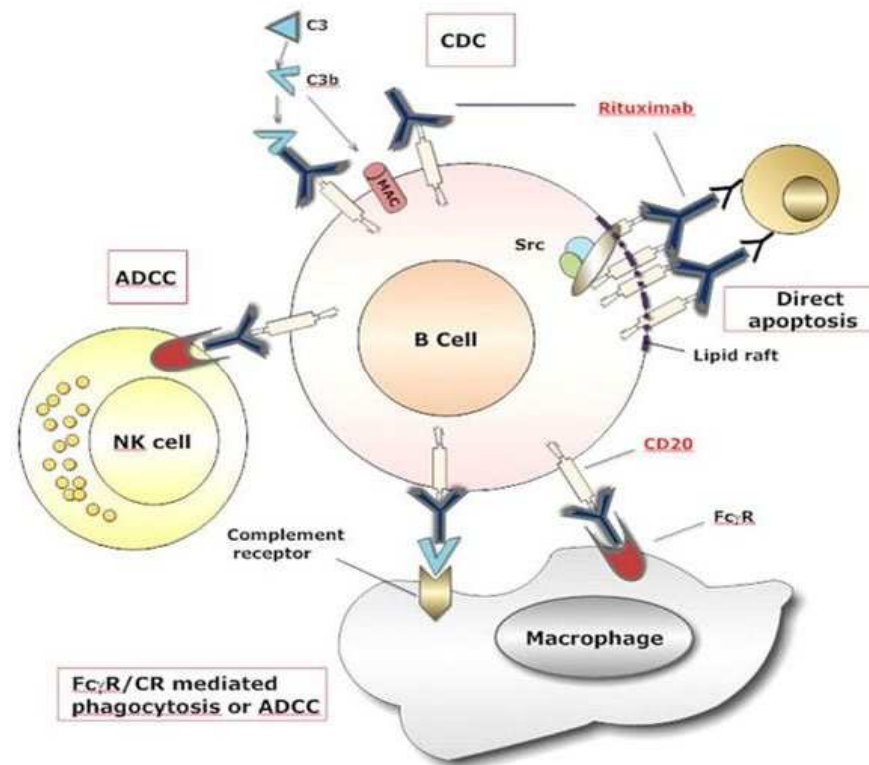
Cancer Immunotherapy

	Non-specific	Targeted
Humoral	-	„Naked” antibodies Immunotoxins
Humoral → Cellular	Check-point inhibitors	Bispecific antibodies
Cellular	Hematopoietic stem cell transplantation	CAR T -cells



„Naked” antibodies Rituximab (anti-CD20)

Rituximab's mechanisms of action



JAGLOWSKI et al, BLOOD, 11 NOVEMBER 2010 VOLUME 116, NUMBER 19

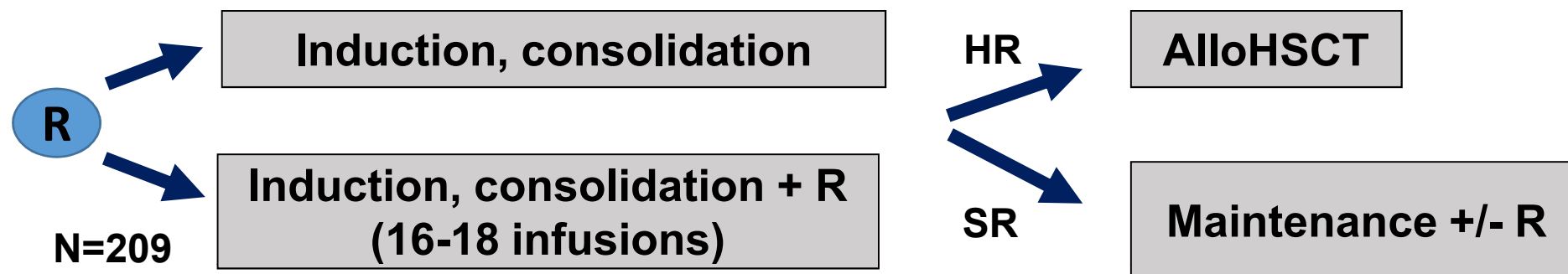
5



MARIA SKŁODOWSKA-CURIE
INSTITUTE – ONCOLOGY CENTER
GLIWICE BRANCH

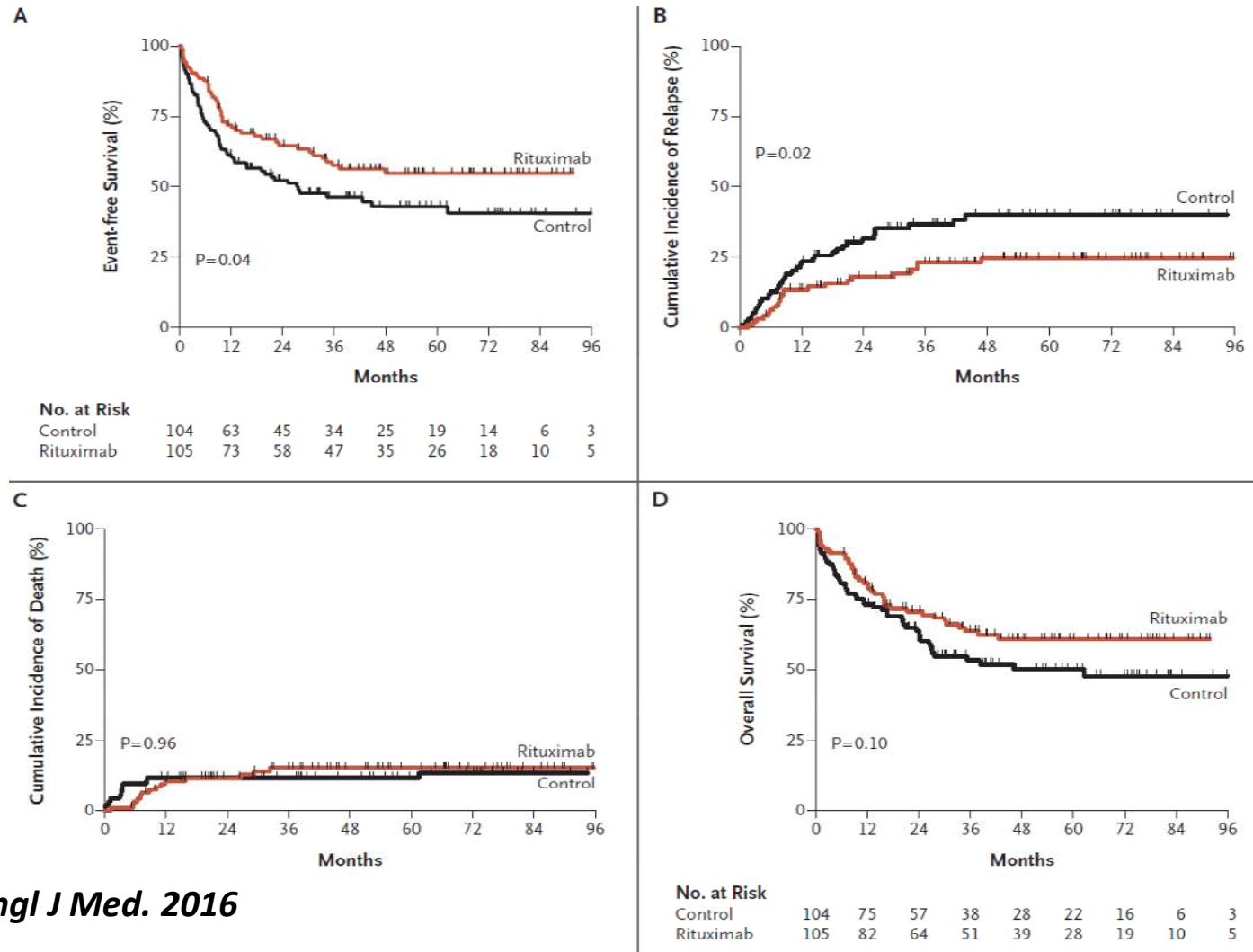
Rituximab

GRAAPH study
De novo Ph- ALL, CD20+ >20%, age 18-59 years



Maury S, et al., N Engl J Med. 2016

Rituximab



Maury S, et al., *N Engl J Med.* 2016



MARIA SKŁODOWSKA-CURIE
INSTITUTE – ONCOLOGY CENTER
GLIWICE BRANCH

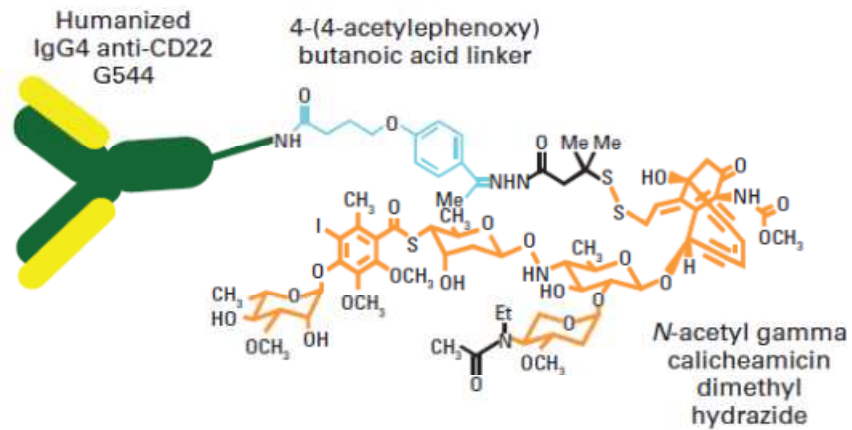
Cancer Immunotherapy

	Non-specific	Targeted
Humoral	-	„Naked” antibodies Immunotoxins
Humoral → Cellular	Check-point inhibitors	Bispecific antibodies
Cellular	Hematopoietic stem cell transplantation	CAR T -cells

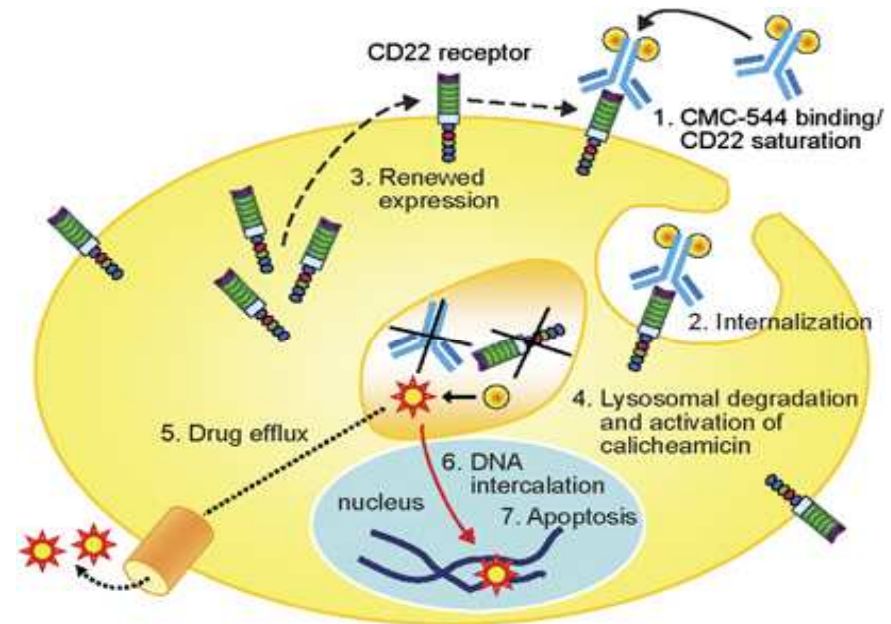


Immunotoxins

Inotuzumab ozogamycin (anti-CD22 + calicheamicin, humanized)



Advani A, et al., J Clin Oncol 2010



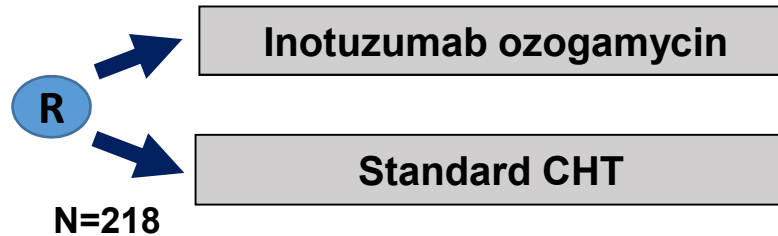
Cortes JE, et al., N Eng J Med 2013



Immunotoxins

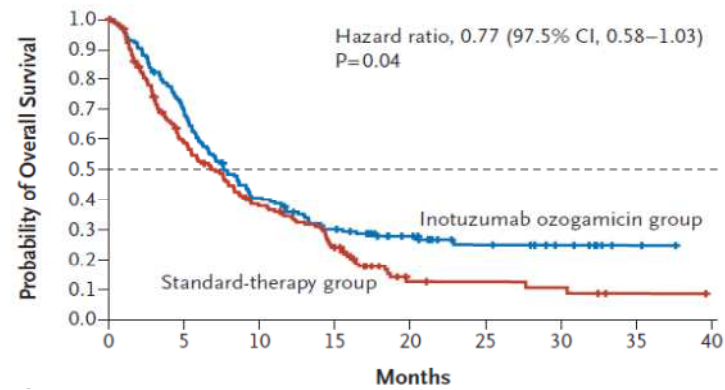
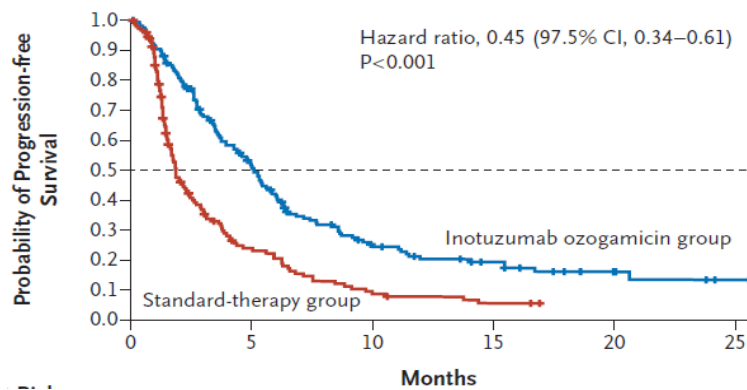
Inotuzumab ozogamycin

Rel/Ref B-ALL



Kantarjian H, et al., N Engl J Med 2016

	INO	CHT	P
CR	81%	29%	<0.001



Cancer Immunotherapy

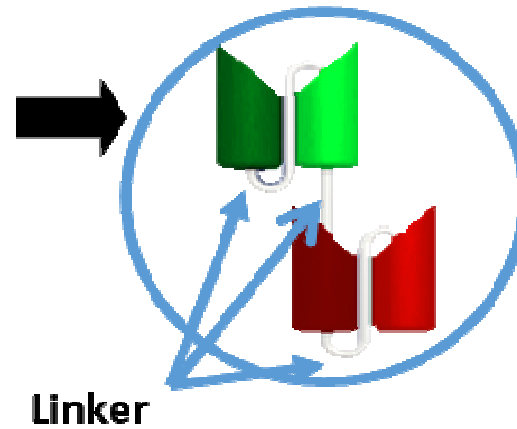
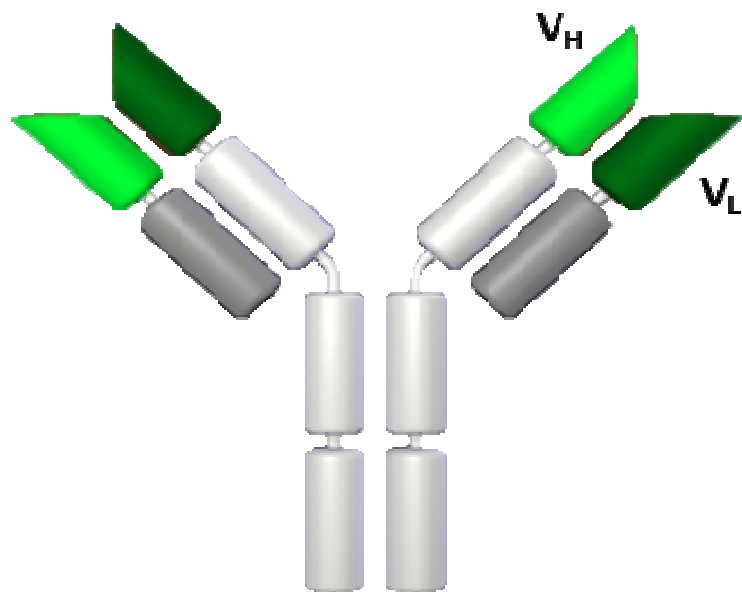
	Non-specific	Targeted
Humoral	-	„Naked” antibodies Immunotoxins
Humoral → Cellular	Check-point inhibitors	Bispecific antibodies
Cellular	Hematopoietic stem cell transplantation	CAR T -cells



Bispecific antibodies

Blinatumomab (anti-CD19/anti-CD3)

α -CD19 antibody
Single-chain antibody



α -CD3
Single-chain antibody



- 55 kDa
- Very short distance between arms – allows T cells and tumour cells to come into close proximity



Blinatumomab mechanize of action:

- T-cells are engaged in immune response against CD19+ cells

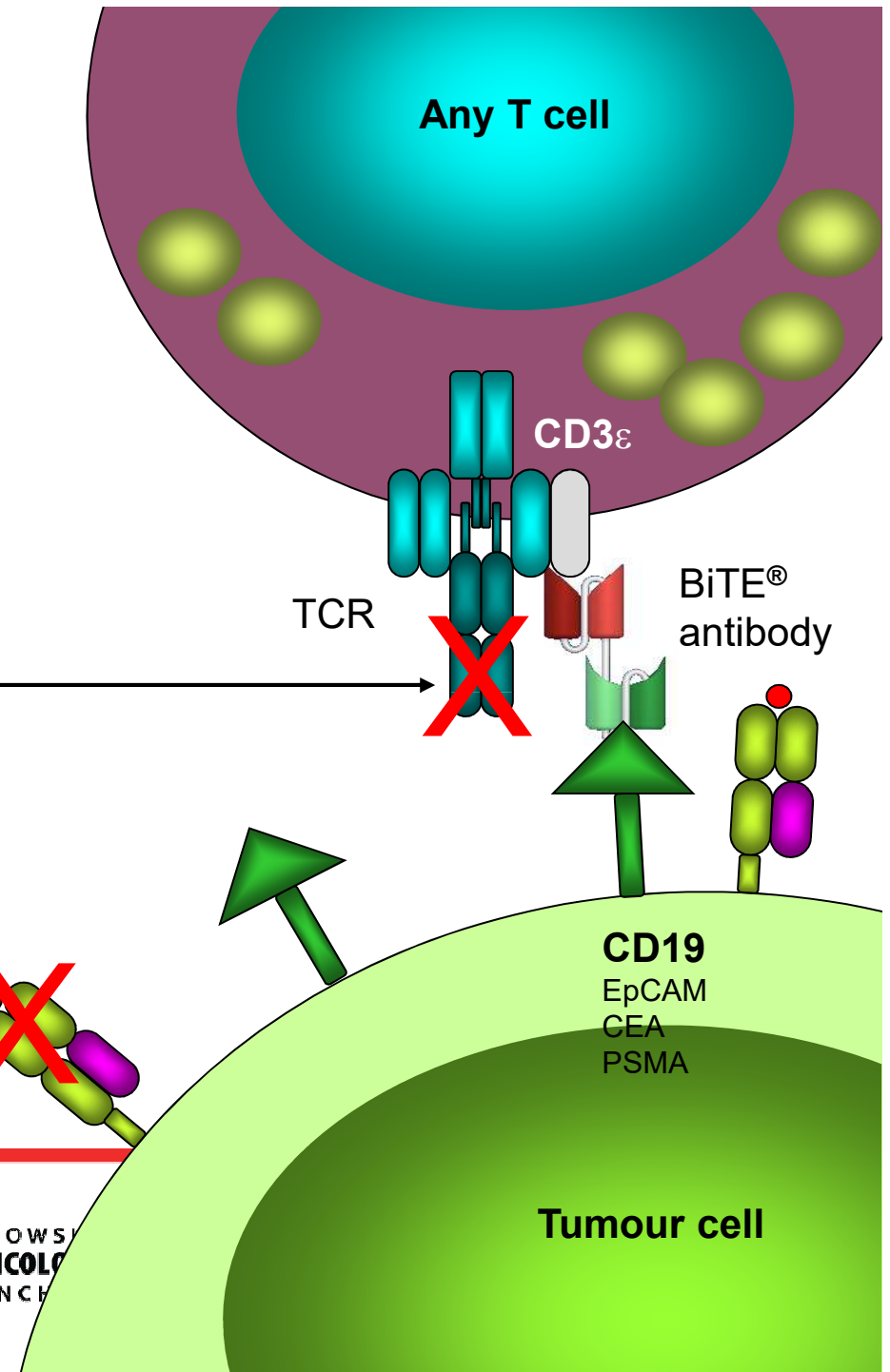
No need for specific receptor

No need for MHC expression and peptide presentation



MARIA SKŁODOWSKA-CURIE
INSTITUTE - ONCOLOGY
GLIWICE BRANCH

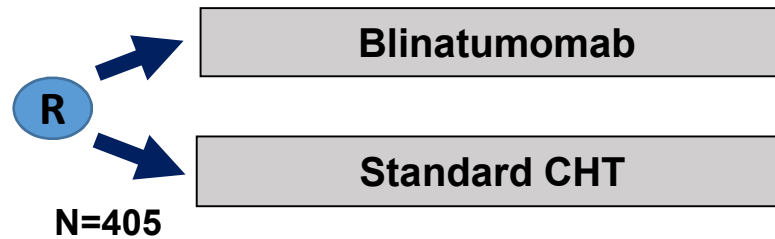
Adapted from Baeuerle PA & Reinhardt C. Cancer Res 2009;69:4941-4944



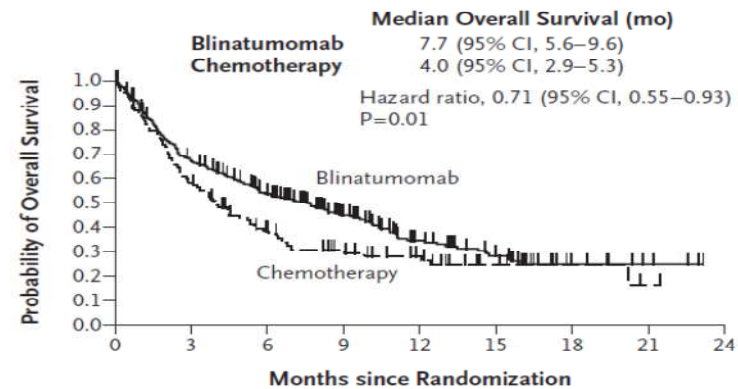
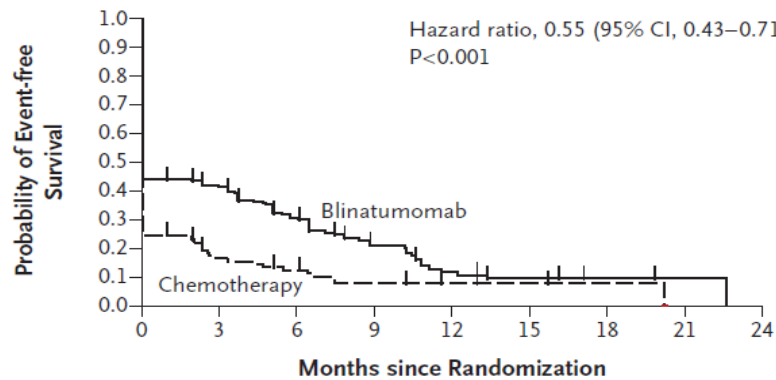
Bispecific antibodies

Blinatumomab

Rel/Ref B-ALL



	BLINA	CHT	P
CR/CRi	44%	25%	<0.001



Kantarjian H, et al., N Engl J Med 2017



Cancer Immunotherapy

	Non-specific	Targeted
Humoral	-	„Naked” antibodies Immunotoxins
Humoral → Cellular	Check-point inhibitors	Bispecific antibodies
Cellular	Hematopoietic stem cell transplantation	CAR T -cells



Annals of Hematology

September 2017, Volume 96, Issue 9, pp 1569–1572

Low-dose nivolumab-induced responses in acute lymphoblastic leukaemia relapse after allogeneic haematopoietic stem cell transplantation

Chan T.S.Y, Sim J.P.Y., Kwong Y.L.

Department of Medicine, Queen Mary Hospital, Pokfulam, Road,
Hong Kong



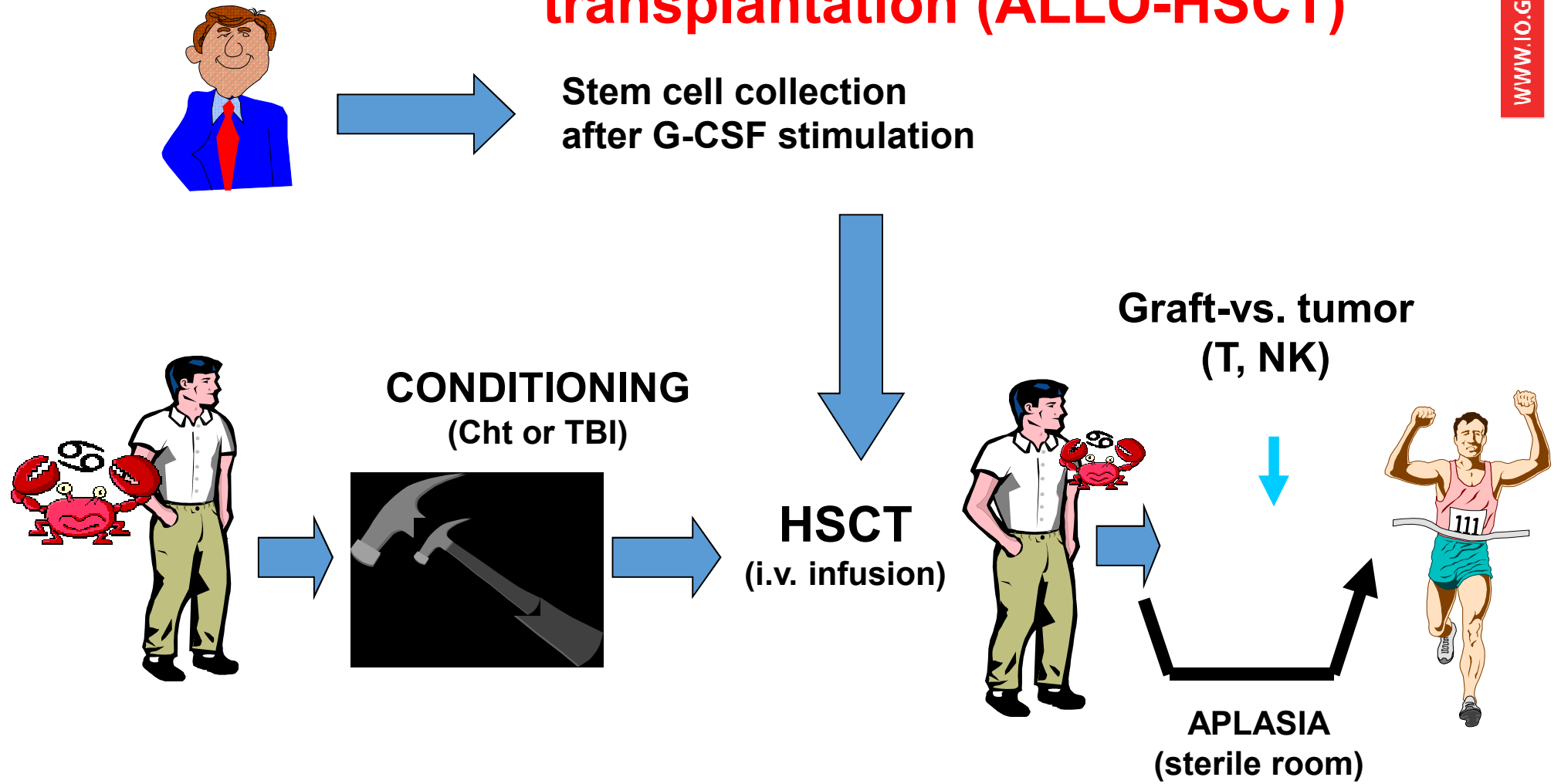
MARIA SKŁODOWSKA-CURIE
INSTITUTE – ONCOLOGY CENTER
GLIWICE BRANCH

Cancer Immunotherapy

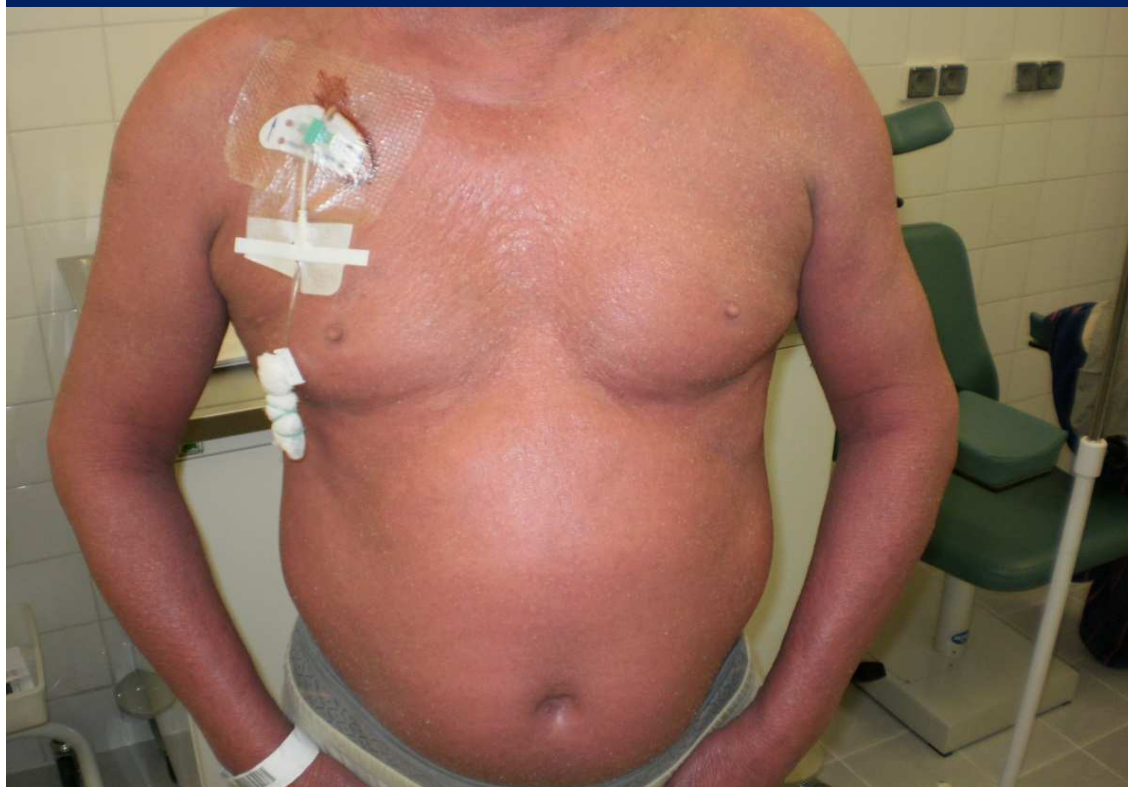
	Non-specific	Targeted
Humoral	-	„Naked” antibodies Immunotoxins
Humoral → Cellular	Check-point inhibitors	Bispecific antibodies
Cellular	Hematopoietic stem cell transplantation	CAR T -cells



Allogeneic hematopoietic stem cell transplantation (ALLO-HSCT)



Relapsed/refractory mycosis fungoides/Sezary syndrome



Before alloH SCT



5 months after alloH SCT

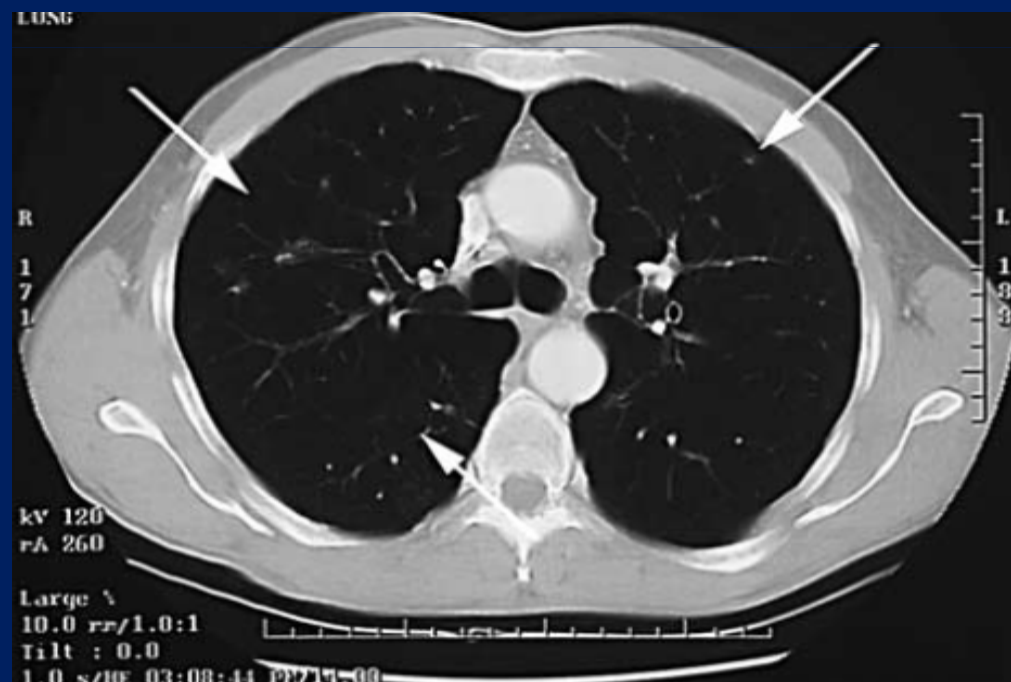
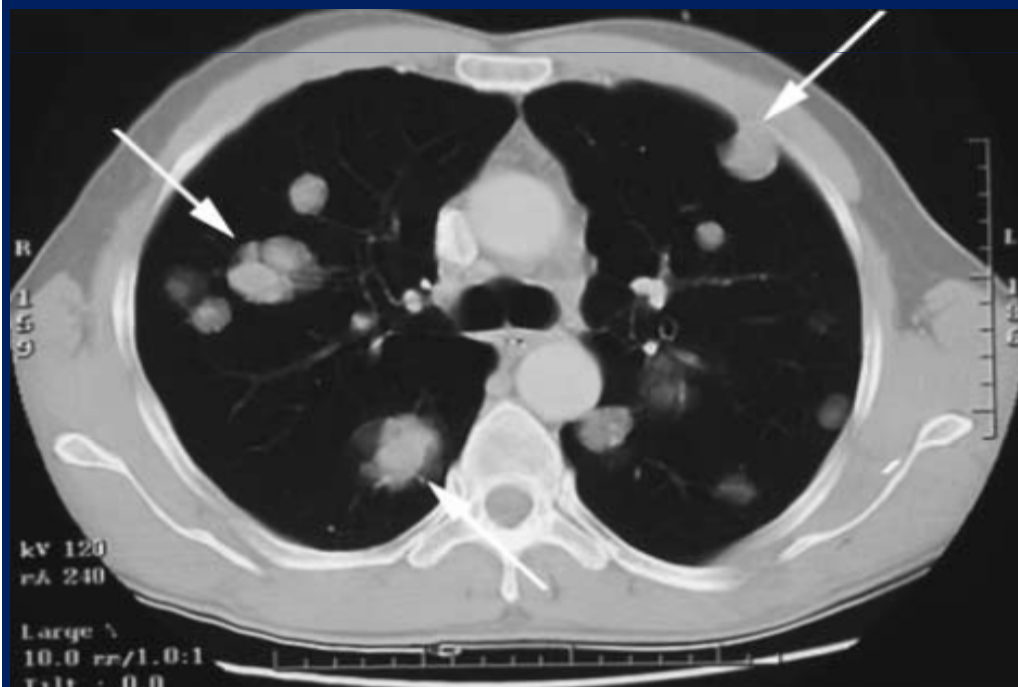
AlloHSCT – renal cancer

Metastatic renal cancer, resistant to CHT

N=19

Cy 60 mg/kg d. -7,-6
Fludara 25 mg/m² d. -5,-4,-3,-2,-1
+ alloHSCT

*Childs et al.,
NEJM 2000*



AlloH SCT for relapsed/refractory ALL

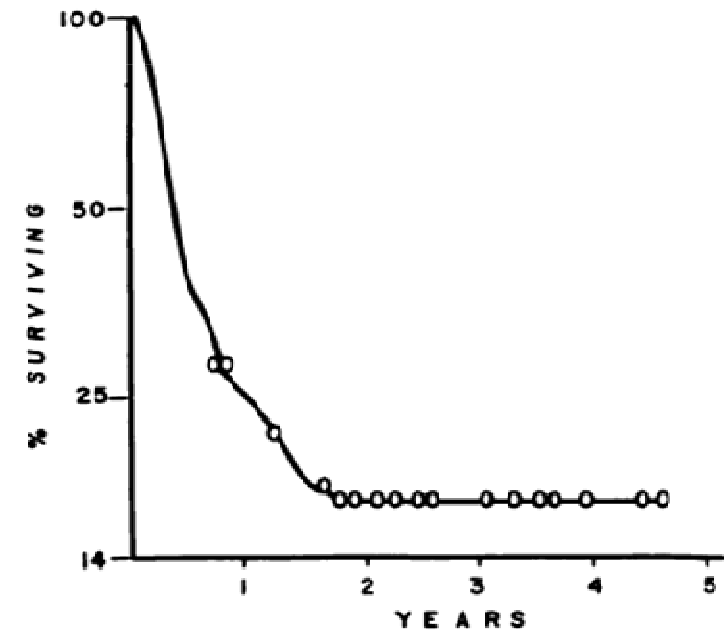
blood

1977 49: 511-533

One hundred patients with acute leukemia treated by chemotherapy, total body irradiation, and allogeneic marrow transplantation

ED Thomas, CD Buckner, M Banaji, RA Clift, A Fefer, N Flournoy, BW Goodell, RO Hickman, KG Lerner, PE Neiman, GE Sale, JE Sanders, J Singer, M Stevens, R Storb and PL Weiden

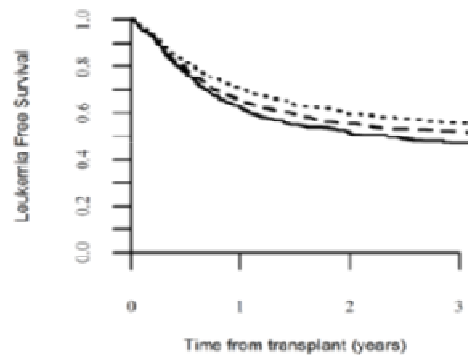
End-stage disease	Diagnosis	
	ALL	AML
Number of patients	46	54
Patient characteristics		
Age median (range) (yr)	13.5 (4-36)	24.5 (1-56)
Sex: female/male	17/29	22/32
Race: white/nonwhite	41/5	50/4
Status of disease		
Number of remissions before marrow transplant (range)	3 (0-5)	1 (0-5)
Number of patients with:		
Relapse at time of transplant	38	52
History CNS disease	20	4
Active CNS disease	6	6



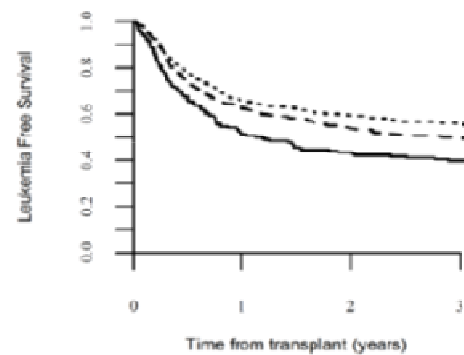
Improving results of HSCT for adults with ALL

Retrospective analysis (EBMT)

Matched sibling HSCT



URD-HSCT



NON-RELAPSE MORTALITY

	MSD	URD
1993-2001	18.8%	28.2%
2002-2007	20%	24.4%
2008-2012	14.7%	22.4%

Glebel S, et al., *Haematologica* 2017;102:139-49

Graft-versus-leukemia in ALL

CIBMTR – retrospective analysis: association of GvHD with outcome alloHSCT in CR1/CR2; N=5215

Relapse	HR (95%CI)	p
aGVHD 1-2 / no cGVHD	0.7 (0.58-0.84)	0.0001
aGVHD 3-4 /no cGVHD	0.61 (0.45-0.82)	0.001
cGVHD / no aGVHD	0.66 (0.51-0.85)	0.0001
cGVHD with aGVHD 1-2	0.57 (0.45-0.73)	<0.0001
cGVHD with aGVHD 3-4	0.49 (0.35-0.71)	0.0001

Overall survival	HR (95%CI)	p
aGVHD 1-2 / no cGVHD	0.83 (0.7-0.98)	0.025
aGVHD 3-4 /no cGVHD	2.43 (2.04-2.89)	0.001
cGVHD with aGVHD 3-4	1.46 (1.18-1.81)	0.0001

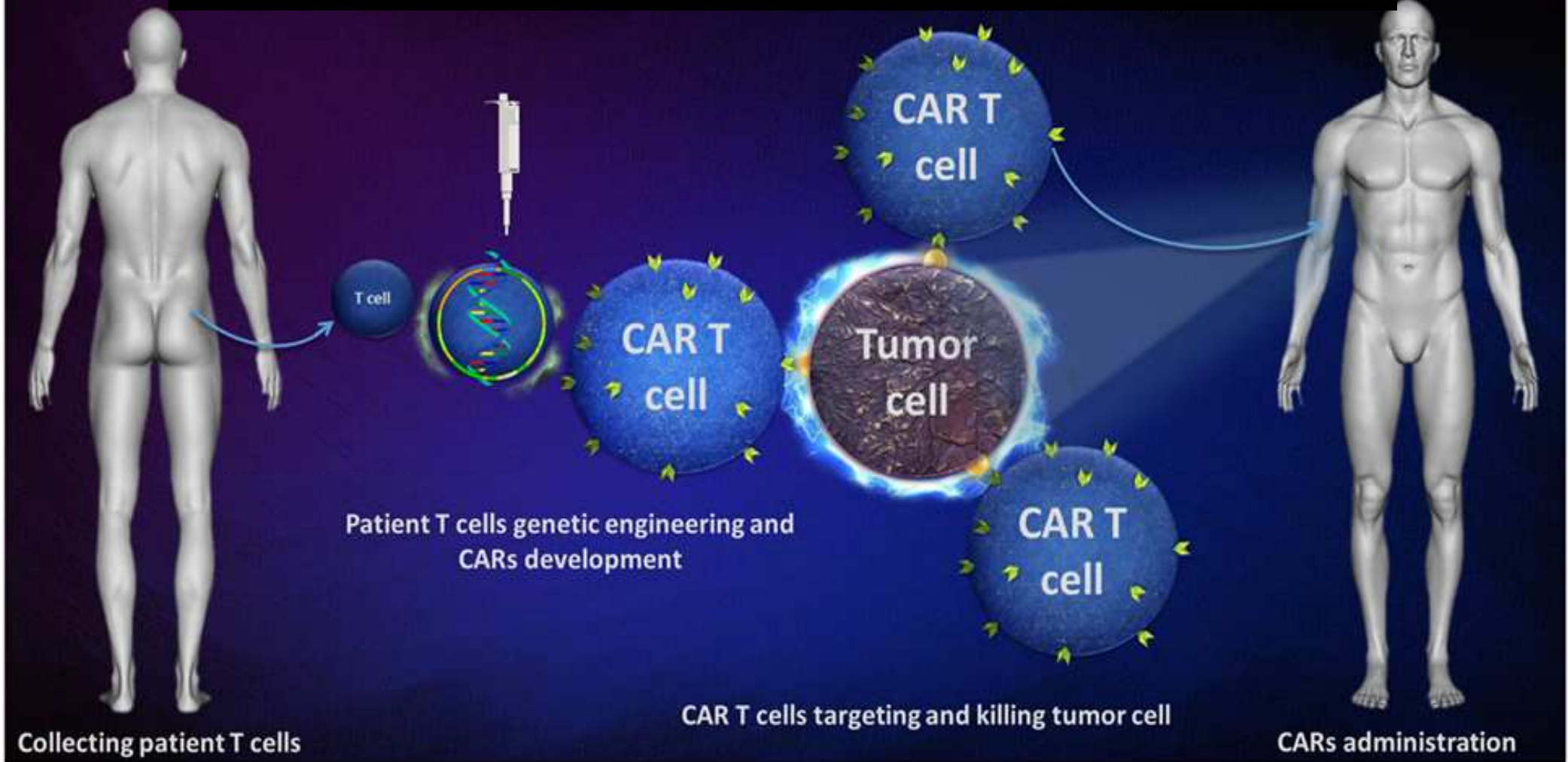
Yeshurun M et al., ASH 2017, abstract #518

Cancer Immunotherapy

	Non-specific	Targeted
Humoral	-	„Naked” antibodies Immunotoxins
Humoral → Cellular	Check-point inhibitors	Bispecific antibodies
Cellular	Hematopoietic stem cell transplantation	CAR T-cells



CHIMERIC ANTIGEN RECEPTOR (CAR) T-CELLS

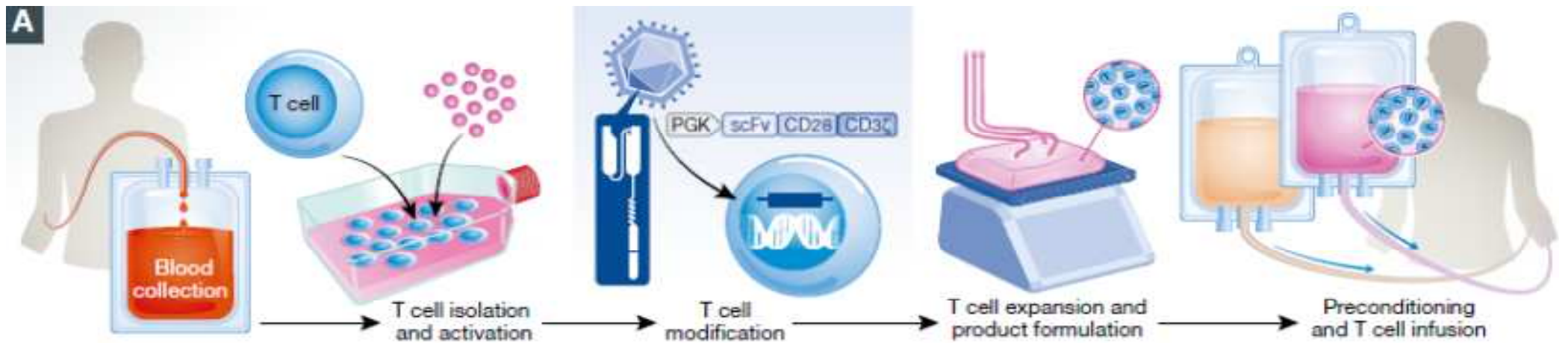


June CH, et al., Front Immunol 2018



MARIA SKŁODOWSKA-CURIE
INSTITUTE – ONCOLOGY CENTER
GLIWICE BRANCH

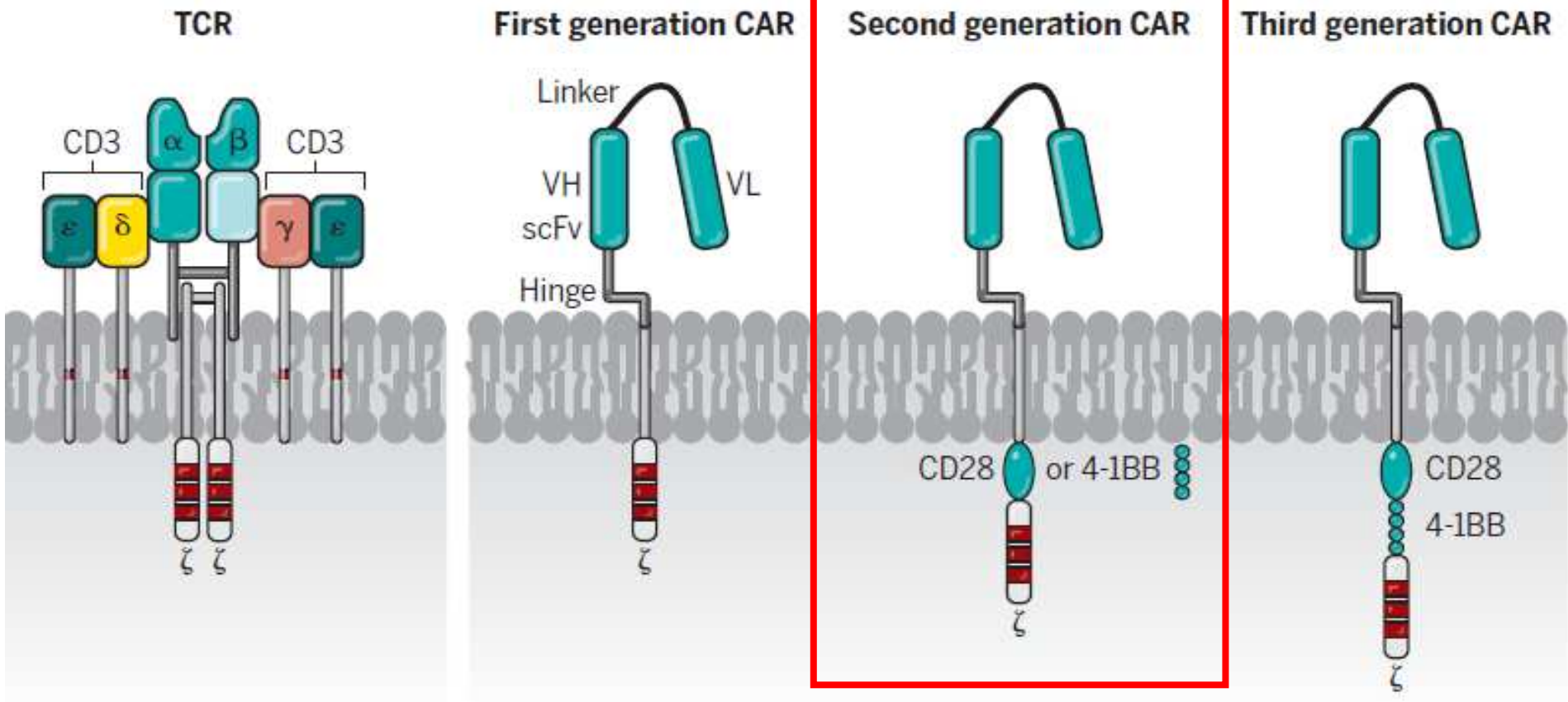
CAR T-cells production



Hartman J, et al., EMBO Molecular Medicine 2017



MARIA SKŁODOWSKA-CURIE
INSTITUTE – ONCOLOGY CENTER
GLIWICE BRANCH

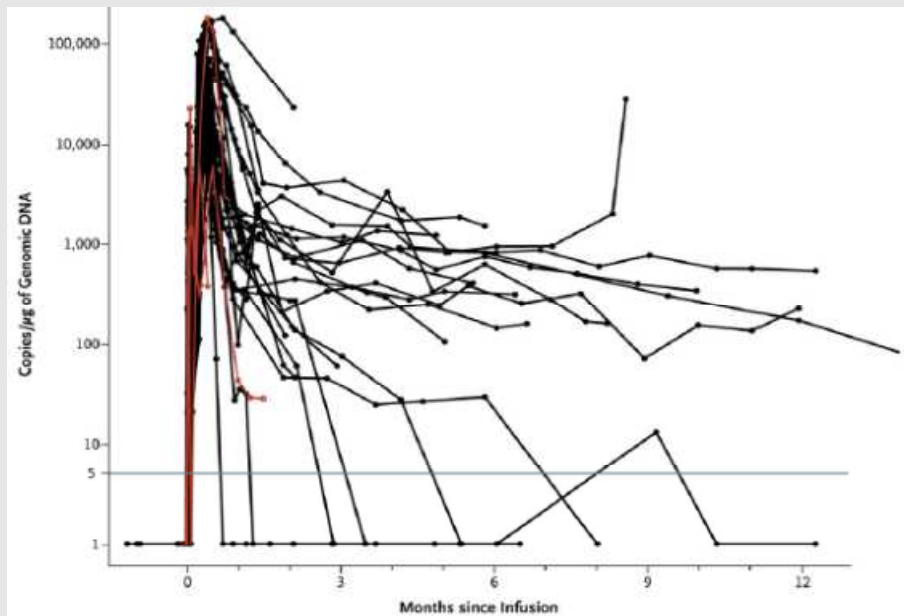


June CH, et al., Science 2018

CAR T-cells: B-ALL

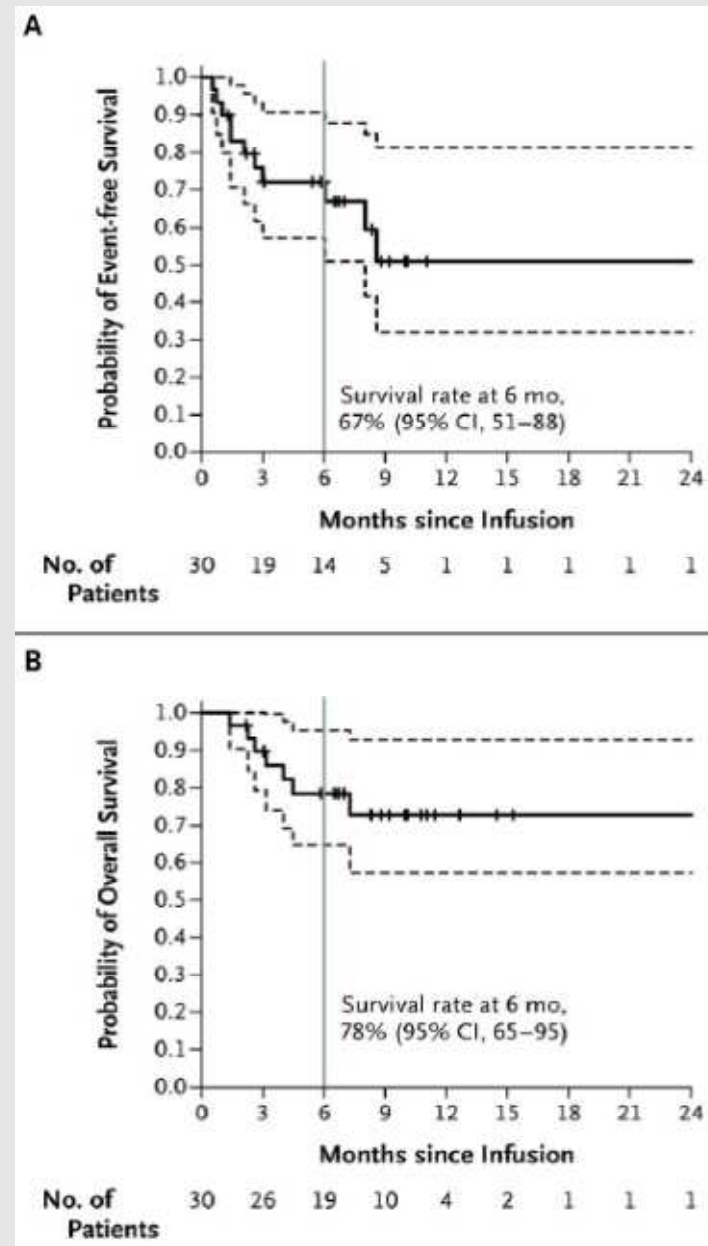
Relapsed/refractory B-ALL
N=30; Age 5-60 years

Lentivirus vector
CTL019



N	30
CR mol	90%

Maude SL, et al., N Eng J Med. 2014

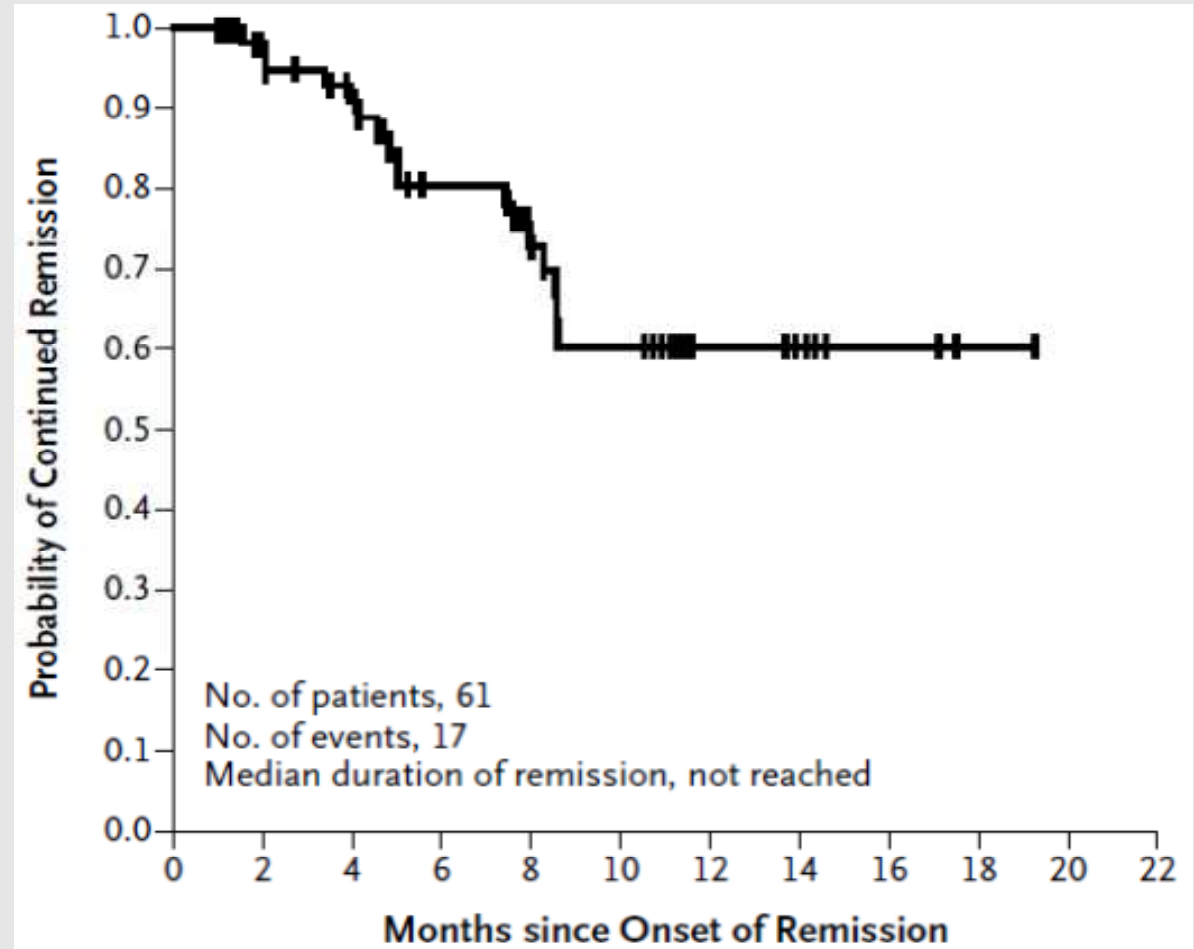


CAR T-cells: B-ALL

Relapsed/refractory B-ALL
N=75; Age 3-23 years

Lentivirus vector
CTL019 (Tisagenlecleucel)

N	75
CR mol	81%



CAR T-cells as a bridge to alloHSCT ?

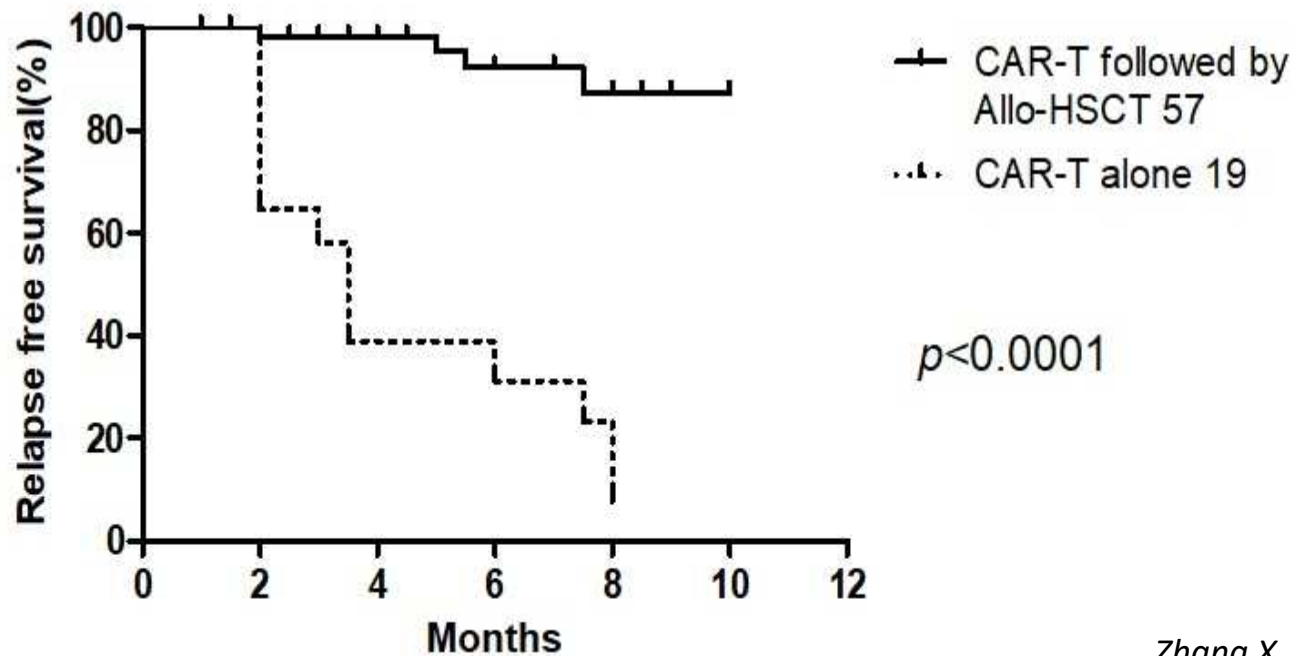
CHINA (Langfang)

R/R B-ALL

N=83

Age: 10 (2-61) years

CD19:28.3z-CAR

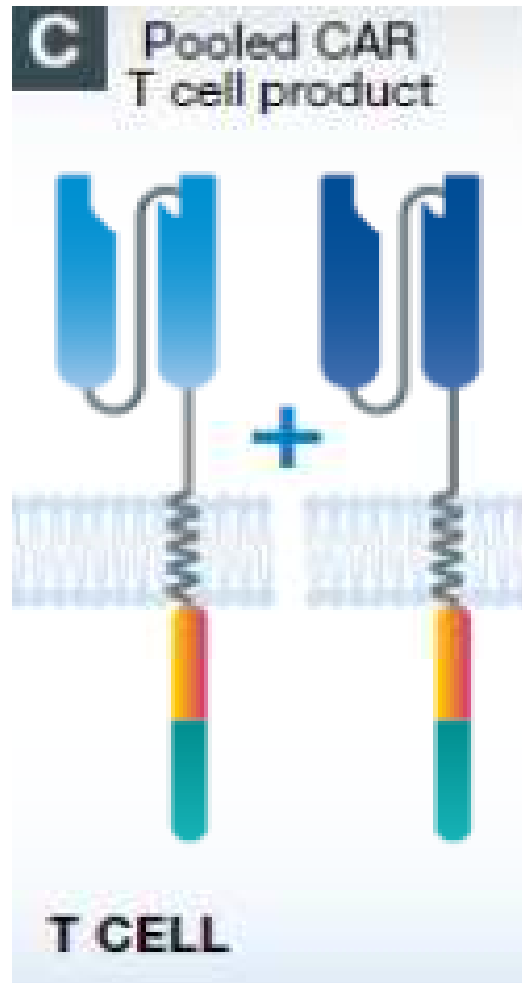


Zhang X, et al., ASH 2018,
abstract #280



„Pooled” CAR T-cells

UK (Londyn)
R/R B-ALL,
N=8
Age: 1-24 years
CD19 + CD22

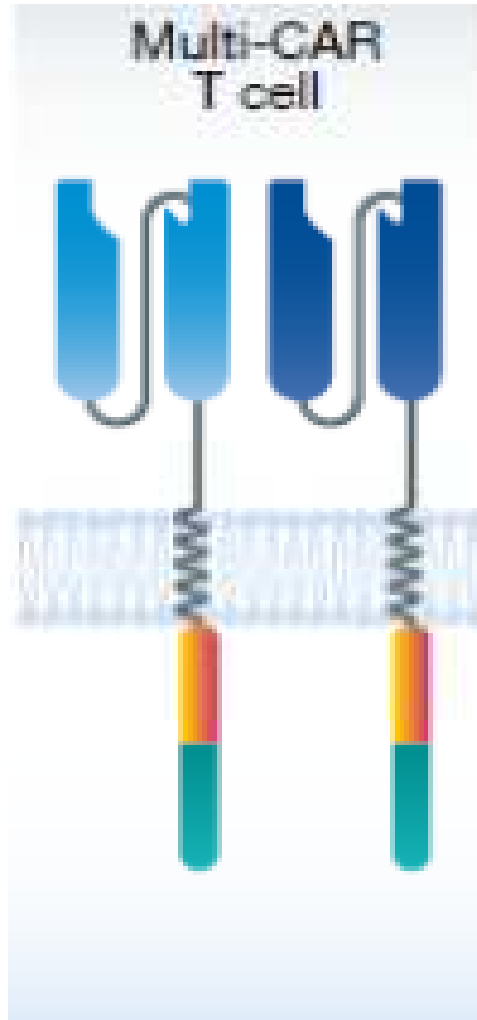


	N=8
CR	75%

*Amorolia PJ, et al., ASH 2018,
abstract #279*

Multi-CAR T-cells

USA (Seattle)
R/R/MRD+ B-ALL,
N=7
Age: 1-26 years
CD19xCD22



	N=7
CR	71%

*Gardner R, et al., ASH 2018,
abstract #278*

Tandem „Bispecific” CAR T-cells

USA (Stanford)

R/R B-ALL/NHL,

N=7

Wiek: 35-75 years

CD19/CD22

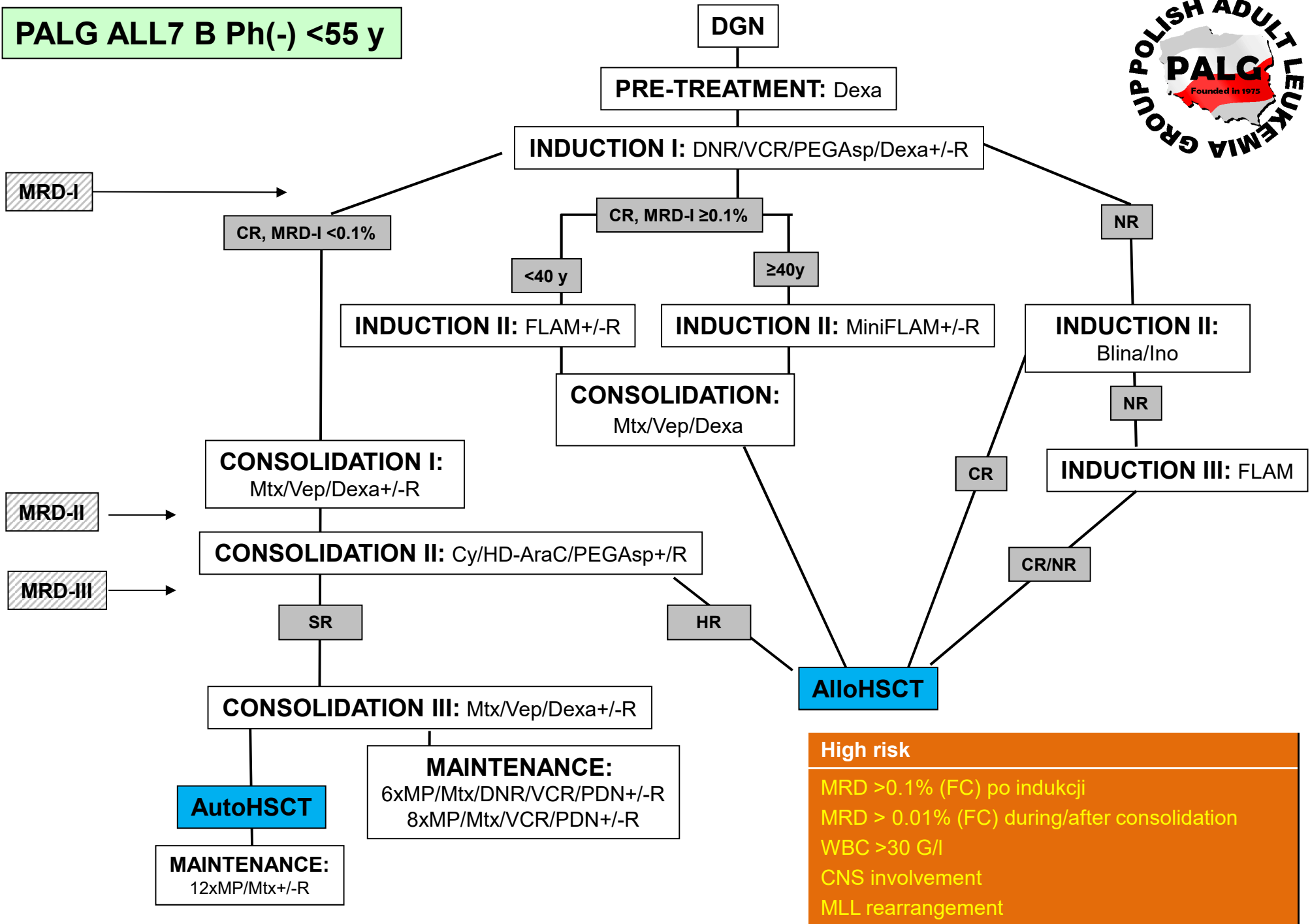


Ptn ID	Age	Gender	Disease	Markers	Previous Lines of Therapy	History of AlloSCT	Max CRS	Max CRES	Best Response
001	71	M	DLBCL-NOS	Double Hit (MYC,BCL2)	3	No	2	2	SD
002	54	M	tDLBCL	Triple Expresser	3	No	0	0	PR
002-2 nd infusion	54	M	tDLBCL	Triple Expresser	4	No	0	0	SD
003	67	M	DLBCL-NOS	Non Double Hit	4	No	1	0	CR
004	50	F	ALL	Ph negative	4	Yes	N/A	N/A	N/A
005	75	M	DLBCL-NOS	Non Double Hit	2	No	1	0	CR
006	67	M	DLBCL-NOS	Non Double Hit	2	No	1	1	PR
007	35	F	ALL	Ph Positive	7	Yes	1	1	CR

Schultz L, et al., ASH 2018, abstract #898



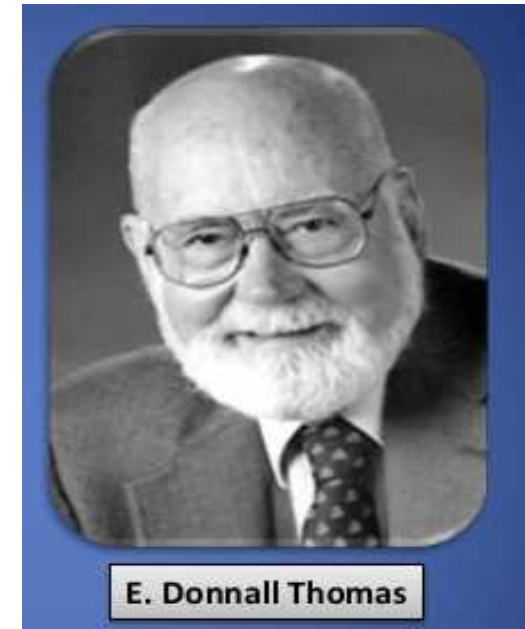
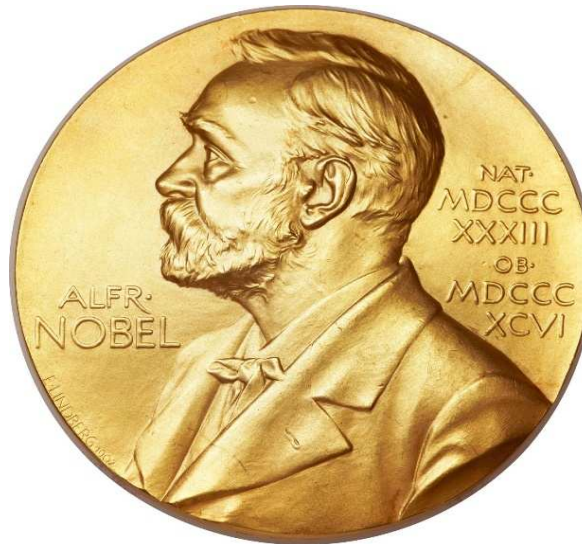
PALG ALL7 B Ph(-) <55 y



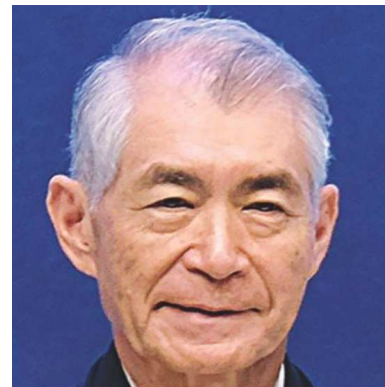
High risk

- MRD > 0.1% (FC) po indukcji
- MRD > 0.01% (FC) during/after consolidation
- WBC > 30 G/l
- CNS involvement
- MLL rearrangement

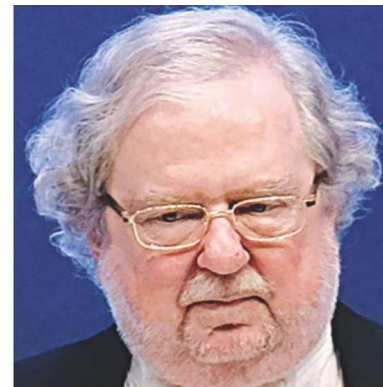
Nobel prize in Medicine and Physiology was awarded to Köhler, Milstein and Jerne in 1984



WWW.IO.GLIWICE.PL



Tasuku Honjo



James Allison



**MARIA SKŁODOWSKA-CURIE
INSTITUTE – ONCOLOGY CENTER
GLIWICE BRANCH**



MARIA SKŁODOWSKA-CURIE
INSTITUTE – ONCOLOGY CENTER
GLIWICE BRANCH